

FLANGE BRACING

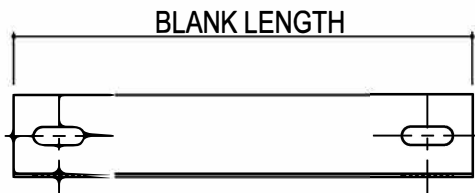
- AG0003 - FLANGE BRACE MARK NUMBER DETAIL
 - AG0005 - BUILDING EXPANSION NOTE
 - AG0010 - FLANGE BRACE AT PURLIN AND RAFTER
 - AG0014 - FLANGE BRACE AT EXP EW RAFTER & PURLIN
 - AG0020 - FLANGE BRACE DETAILS FOR JOIST TO RAFTER CONNECTION
 - AG0025 - FLANGE BRACE AT EXP EW RAFTER & JOIST
 - AG0026 - ALL BOLTED FLANGE BRACE AT JOIST & RAFTER CONN
 - AG0027 - ALL BOLTED FLANGE BRACE @ EXP EW FOR JOIST & RAFTER CONN
 - AG0030 - FLANGE BRACE AT COLUMN & GIRT
 - AG0034 - FLANGE BRACE AT EXP EW COLUMN & GIRT
 - AG0040 - FLANGE BRACE AT COLUMN & MASONARY WALL
 - AG0050 - FLANGE BRACE AT COLUMN & CEE GIRT
 - AG0060 - FLANGE BRACE AT C.F. COLUMN & GIRT
 - AG0070 - FLANGE BRACE AT C.F. COLUMN & MAS WALL
 - AG0080 - FLANGE BRACE AT C.F. RAFTER & PURLIN
 - AG0090 - FLANGE BRACE AT CF COLUMN & CEE GIRT
 - AG0100 - FLANGE BRACE AT CF COLUMN & HR CEE
 - AG0105 - FLANGE BRACE WITH BASKET INSULATION OR LINER AT COLUMN
 - AG0110 - FLANGE BRACE WITH BASKET INSUL OR LINER AT RAFTER
 - AG0140 - FLANGE BRACE WITH BASKET INSUL OR LINER @ EW RAFTER
 - AG0160 - FLANGE BRACE WITH BASKET INSUL OR LINER @ EXP EW COL
 - AG0170 - FLANGE BRACE AT CF COLUMN & GIRT W/ LINER
 - AG0180 - FLANGE BRACE AT CF RAFTER & PURLIN W/ LINER
 - AG0210 - FLANGE BRACE PURLIN & HIP/VALLEY RAFTER
 - AG0500 - FLANGE BRACE @ TRUSS FRAME (6" RAFTER FLANGES)
 - AG0510 - FLANGE BRACE @ EXP EW TRUSS FRAME (6" RAFTER FLANGES)
 - AG0520 - FB DETAILS FOR JOIST TO TRUSS RAF CONN (6" RAFTER FLANGES)
-

AG0003 - FLANGE BRACE MARK NUMBERS

[Download the DWG file by clicking here.](#)

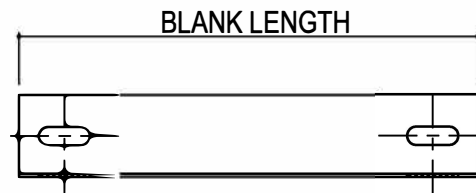
FBC

INDICATES LENGTH OF FLANGE
BRACE IN INCHES



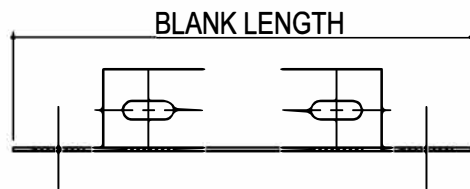
FBH- COUNTER (1-999)

SPECIAL LENGTH FLANGE BRACE



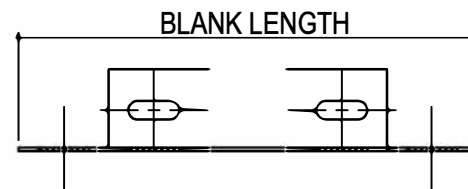
FBE__ COUNTER (01-07)

COPED FLANGE BRACE



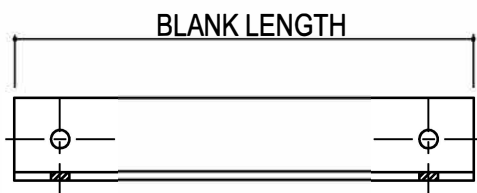
FBJ- COUNTER (1-999)

SPECIAL LENGTH COPED FLANGE BRACE



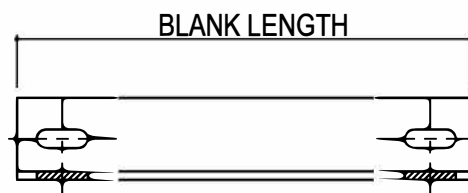
FBF- COUNTER (1-999)

3" X 3" 1/4" BRACE ANGLE



FBK

INDICATES LENGTH OF FLANGE
BRACE IN INCHES



FLANGE BRACE MARK NUMBERS

AG0003

Detailer Notes:

- 1) THIS DETAIL SHOULD BE PLACED ON ALL JOBS THAT HAVE FLANGE BRACING.

AG0005 - BUILDING EXPANSION NOTE

[Download the DWG file by clicking here.](#)

WARNING: IMPORTANT ERECTION NOTE WARNING

AT THIS TIME OF BUILDING EXPANSION, IT IS IMPERATIVE THAT THE MAIN FRAME ENDWALL FLANGE BRACING REQUIREMENTS (FOR THE EXISTING BUILDING) ARE COMPLETED AS NOTED ON YOUR EXISTING BUILDING ERECTION DRAWING SET.

PLEASE REVIEW YOUR EXISTING BUILDING ERECTION DRAWING SET FOR SPECIFIC FLANGE BRACE LOCATIONS REQUIRING INSTALLATION ON BOTH SIDES OF THE EXISTING FRAME AT TIME OF EXPANSION AND INSTALL THESE ADDITIONAL FLANGE BRACES NOW!
IF YOU ARE UNABLE TO LOCATE THE ADDITIONAL FLANGE BRACING MATERIAL SENT WITH THE EXISTING NBS BUILDING ORDER, IT IS YOUR RESPONSIBILITY TO ACQUIRE THE FLANGE BRACE MATERIAL AND INSTALL AT THIS TIME. IT IS VITAL TO THE STRUCTURAL INTEGRITY OF THE EXISTING MAIN FRAME THAT THIS FLANGE BRACE MATERIAL IS INSTALLED.

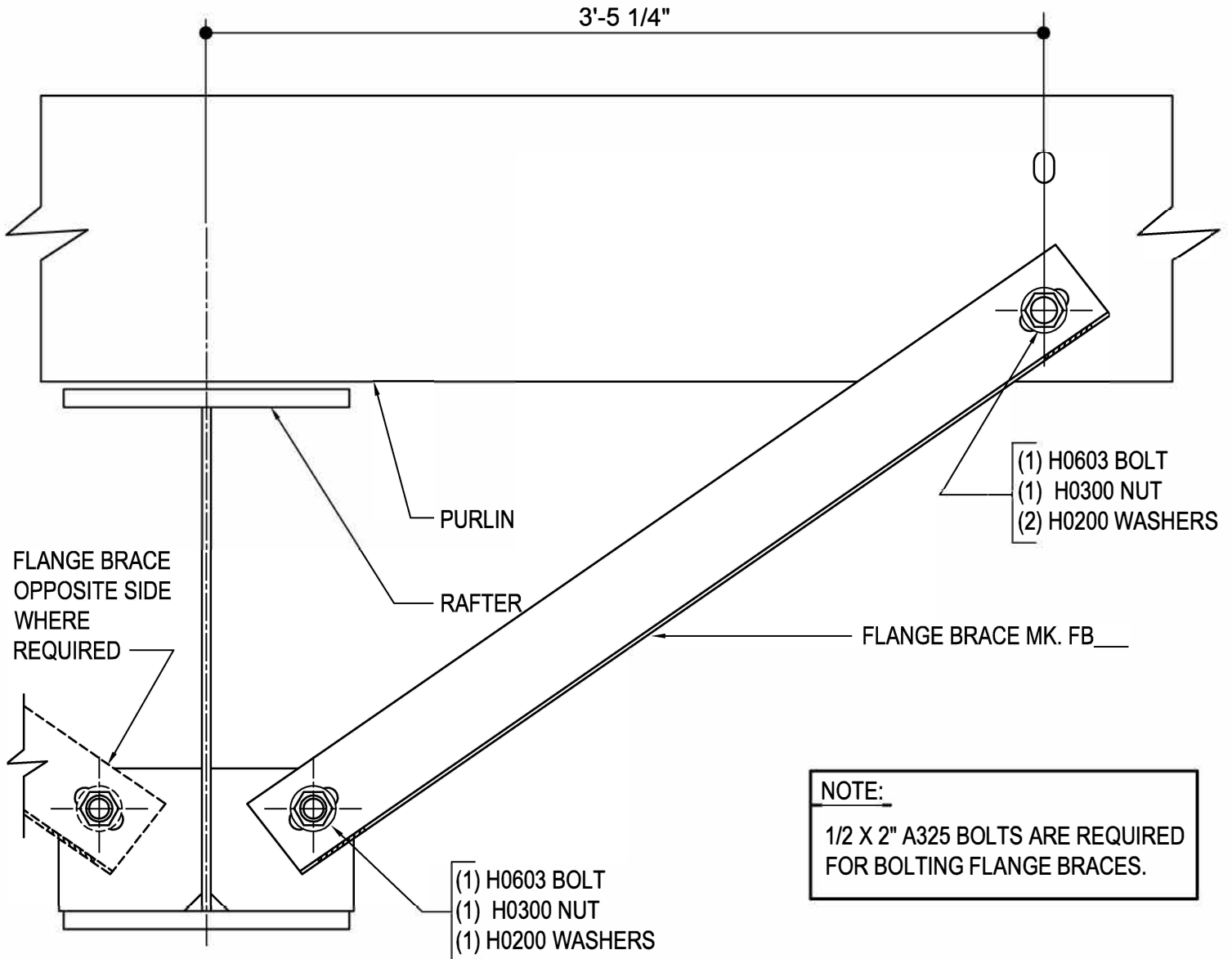
AG0005

Detailer Notes:

- 1) THIS DETAIL IS INTENDED TO BE PLACED ON THE ROOF FRAMING PLAN WHEN EXPANDING ON TO AN EXISTING NBG EXPANDABLE ENDWALL.

AG0010 - FLANGE BRACE AT PURLIN AND RAFTER

[Download the DWG file by clicking here.](#)



FLANGE BRACE AT PURLIN & RAFTER

SEE PLANS AND ELEVATIONS FOR FLANGE BRACE LOCATIONS, PART MARKS & QUANTITIES.

AG0010

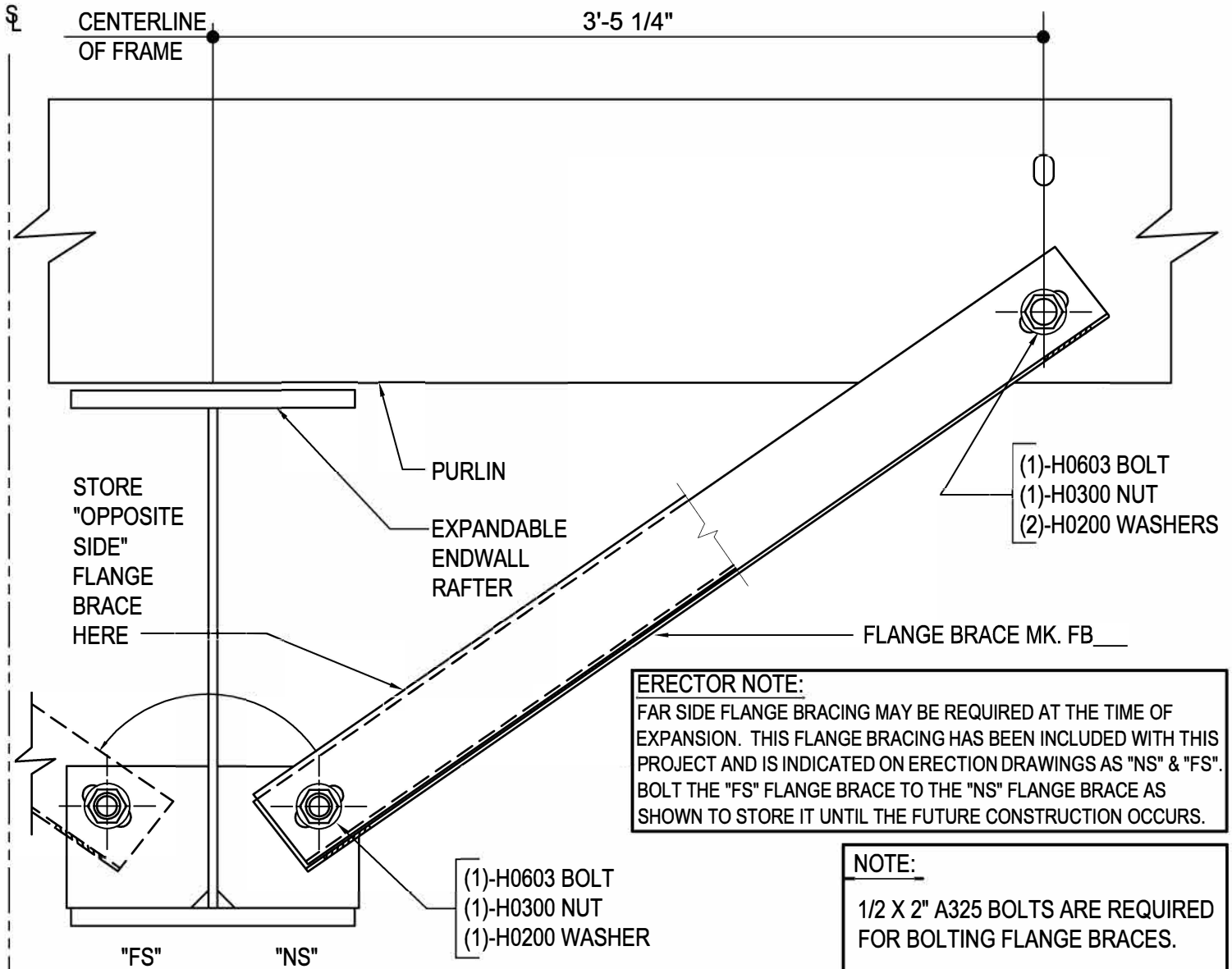
AG0010

Detailer Notes:

1) N/A

AG0014 - FLANGE BRACE AT EXP EW RAFTER & PURLIN

[Download the DWG file by clicking here.](#)



FLANGE BRACE AT EXPANDABLE ENDWALL RAFTER & PURLIN

SEE PLANS AND ELEVATIONS FOR FLANGE BRACE PART MARKS

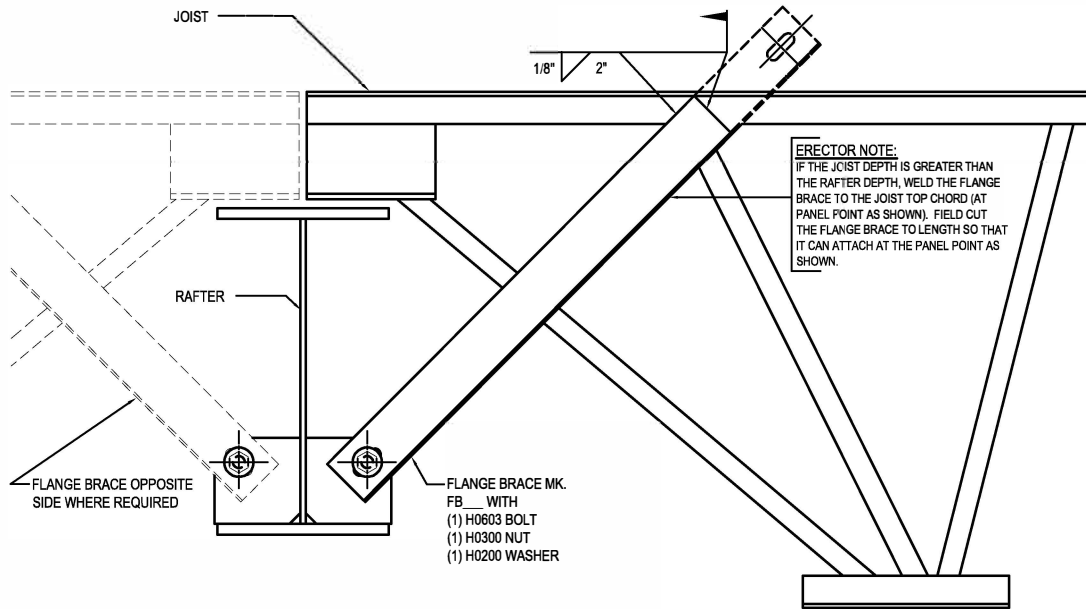
AG0014

Detailer Notes:

- 1) N/A

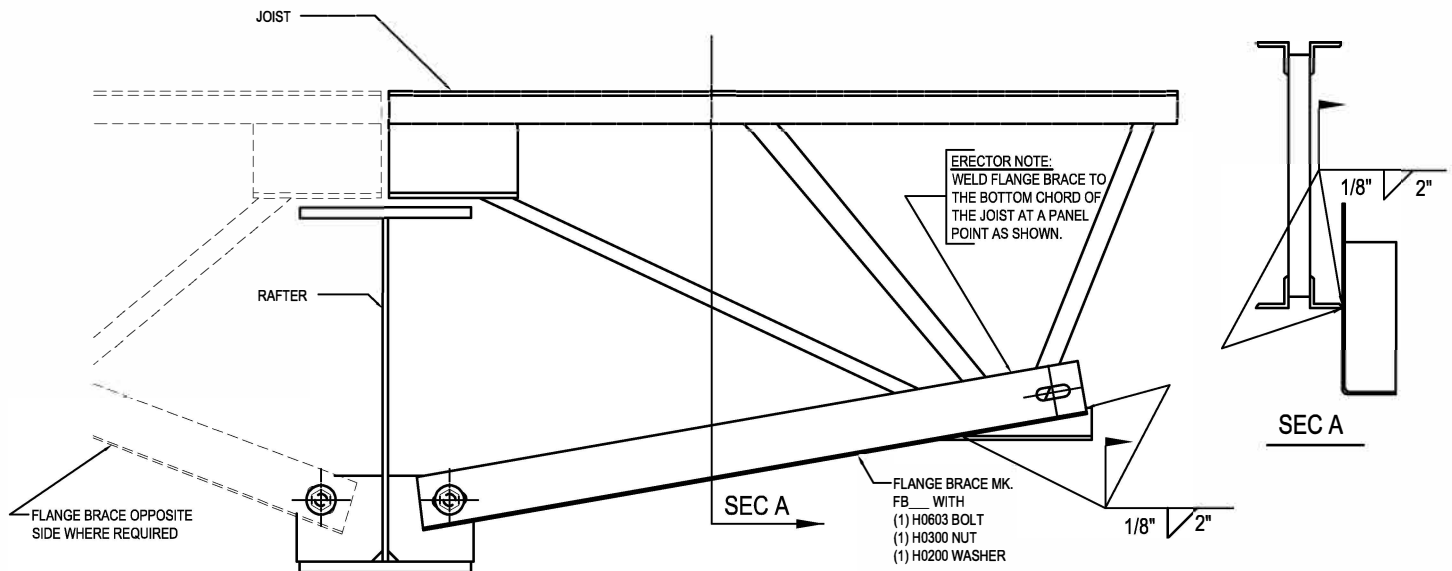
AG0020 - FLANGE BRACE DETAILS FOR JOIST TO RAFTER CONNECTION

[Download the DWG file by clicking here.](#)



FLANGE BRACE DETAIL IF JOIST DEPTH GREATER THAN RAFTER DEPTH

ALL FLANGE BRACE CONNECTIONS REQUIRE 1/2" x 2" A325 BOLTS UNLESS NOTED OTHERWISE
SEE PLANS AND ELEVATIONS FOR FLANGE BRACE LOCATIONS, PART MARKS, & QUANTITIES



FLANGE BRACE DETAIL IF RAFTER DEPTH GREATER THAN JOIST DEPTH

ALL FLANGE BRACE CONNECTIONS REQUIRE 1/2" x 2" A325 BOLTS UNLESS NOTED OTHERWISE
SEE PLANS AND ELEVATIONS FOR FLANGE BRACE LOCATIONS, PART MARKS, & QUANTITIES

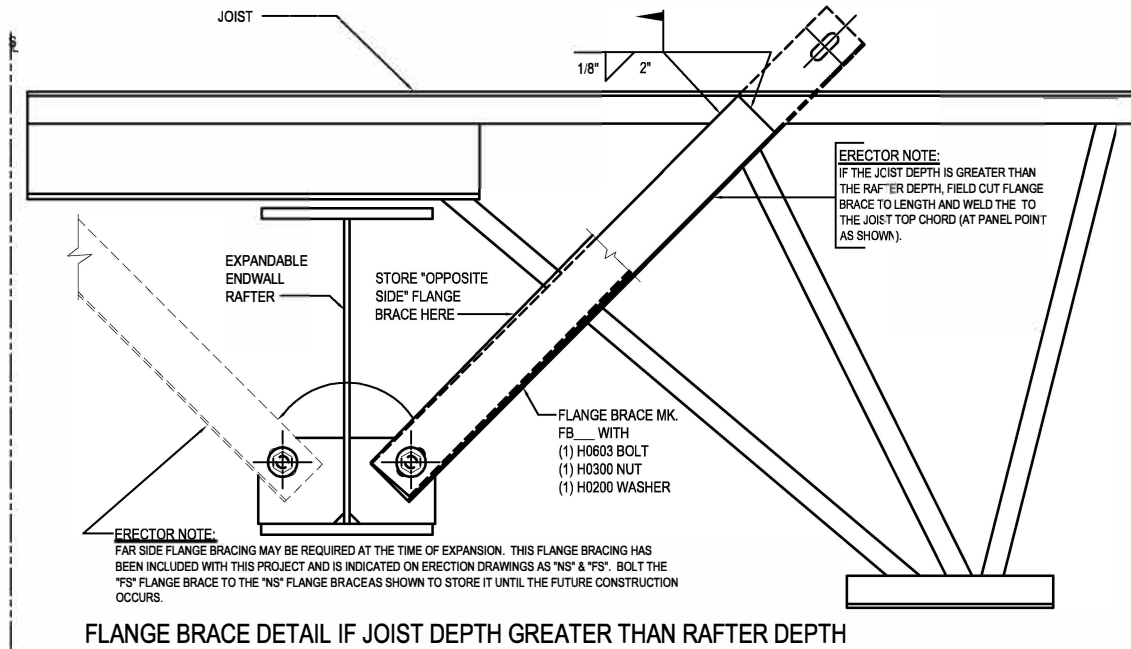
AG0020

Detailer Notes:

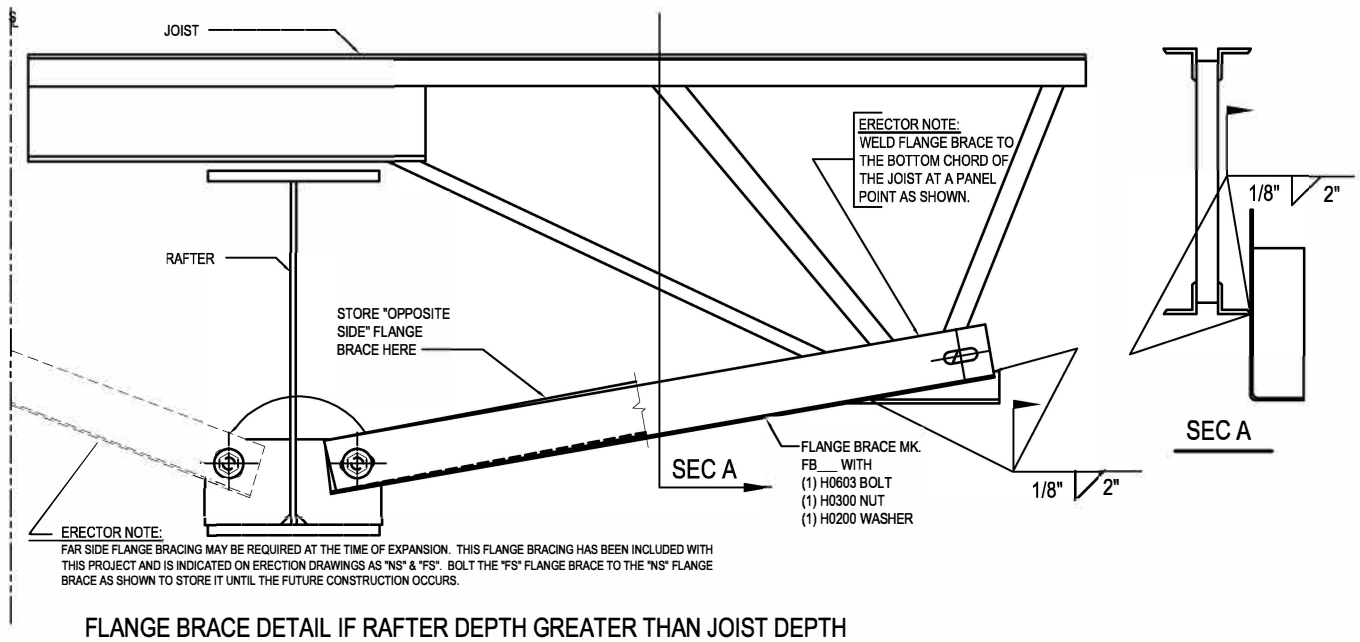
- 1) N/A

AG0025 - FLANGE BRACE AT EXP EW RAFTER & JOIST

[Download the DWG file by clicking here.](#)



ALL FLANGE BRACE CONNECTIONS REQUIRE 1/2" x 2" A325 BOLTS UNLESS NOTED OTHERWISE
SEE PLANS AND ELEVATIONS FOR FLANGE BRACE PART MARKS



ALL FLANGE BRACE CONNECTIONS REQUIRE 1/2" x 2" A325 BOLTS UNLESS NOTED OTHERWISE
SEE PLANS AND ELEVATIONS FOR FLANGE BRACE PART MARKS

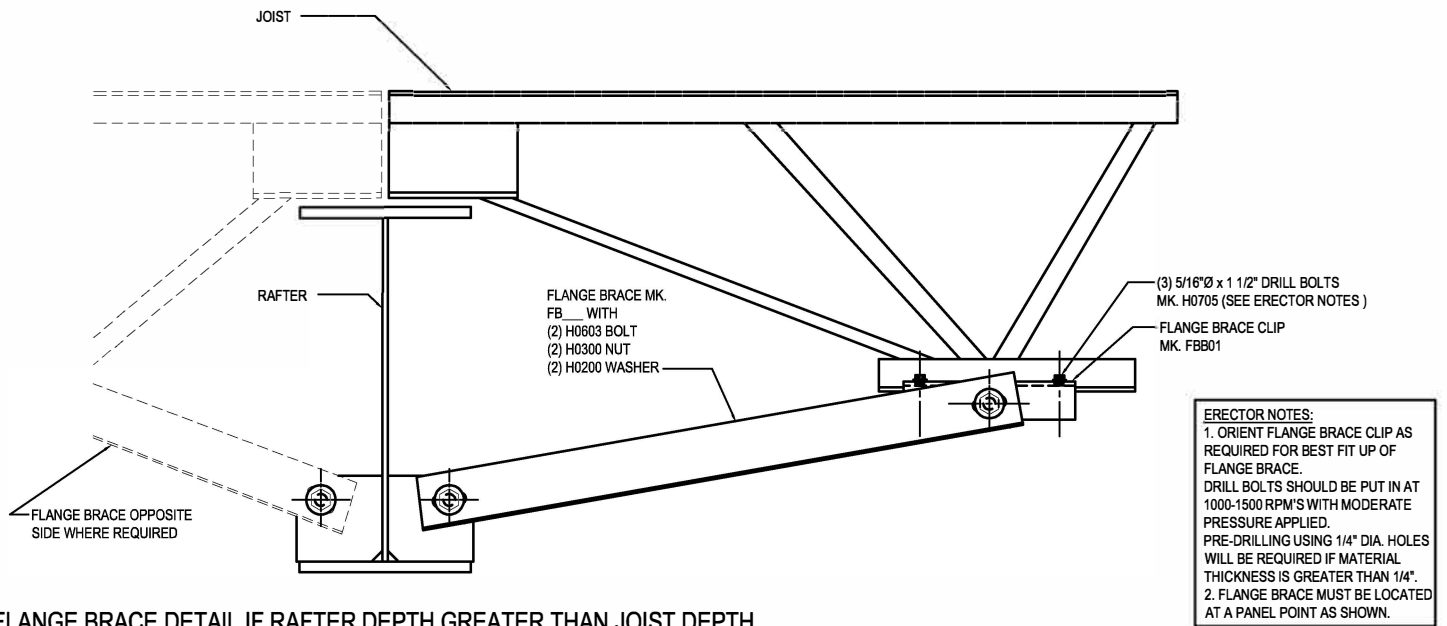
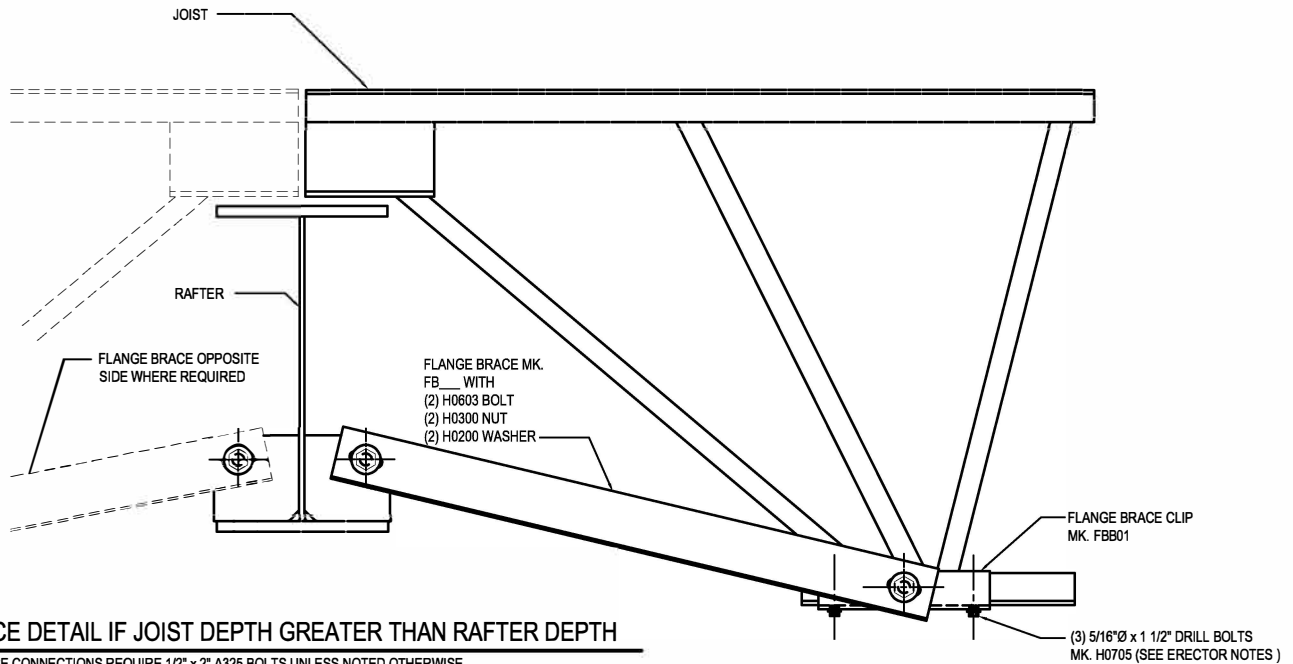
AG0025

Detailer Notes:

- 1) N/A

AG0026 - ALL BOLTED FLANGE BRACE AT JOIST & RAFTER CONN

[Download the DWG file by clicking here.](#)



ERECTOR NOTES:

1. ORIENT FLANGE BRACE CLIP AS REQUIRED FOR BEST FIT UP OF FLANGE BRACE. DRILL BOLTS SHOULD BE PUT IN AT 1000-1500 RPM'S WITH MODERATE PRESSURE APPLIED. PRE-DRILLING USING 1/4" DIA. HOLES WILL BE REQUIRED IF MATERIAL THICKNESS IS GREATER THAN 1/4".
2. FLANGE BRACE MUST BE LOCATED AT A PANEL POINT AS SHOWN.

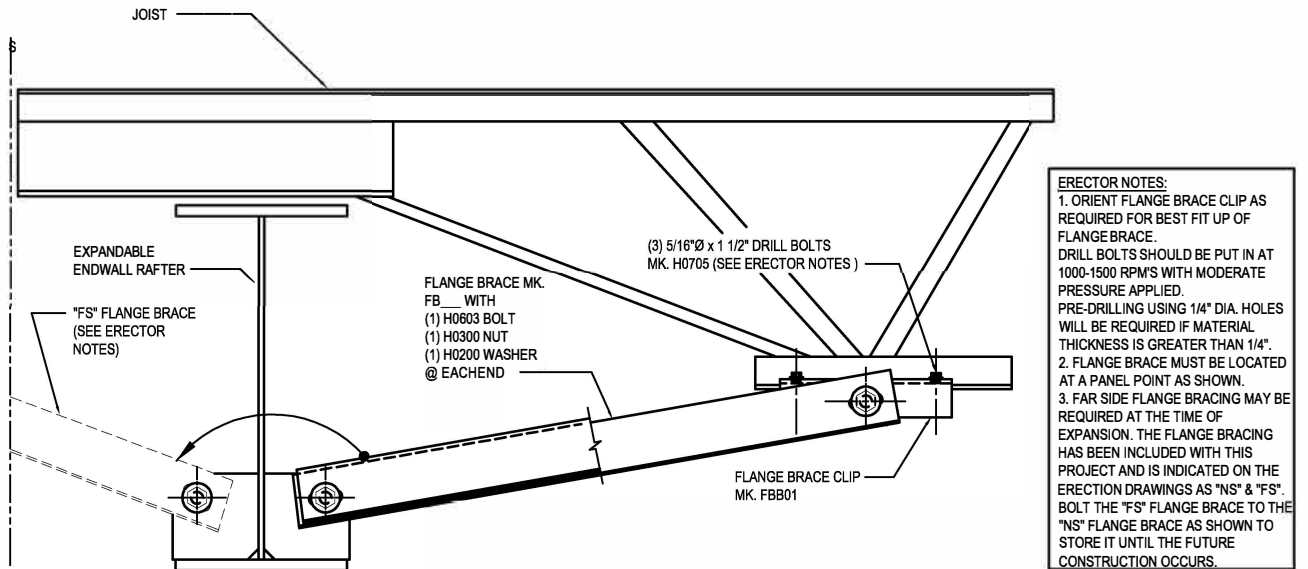
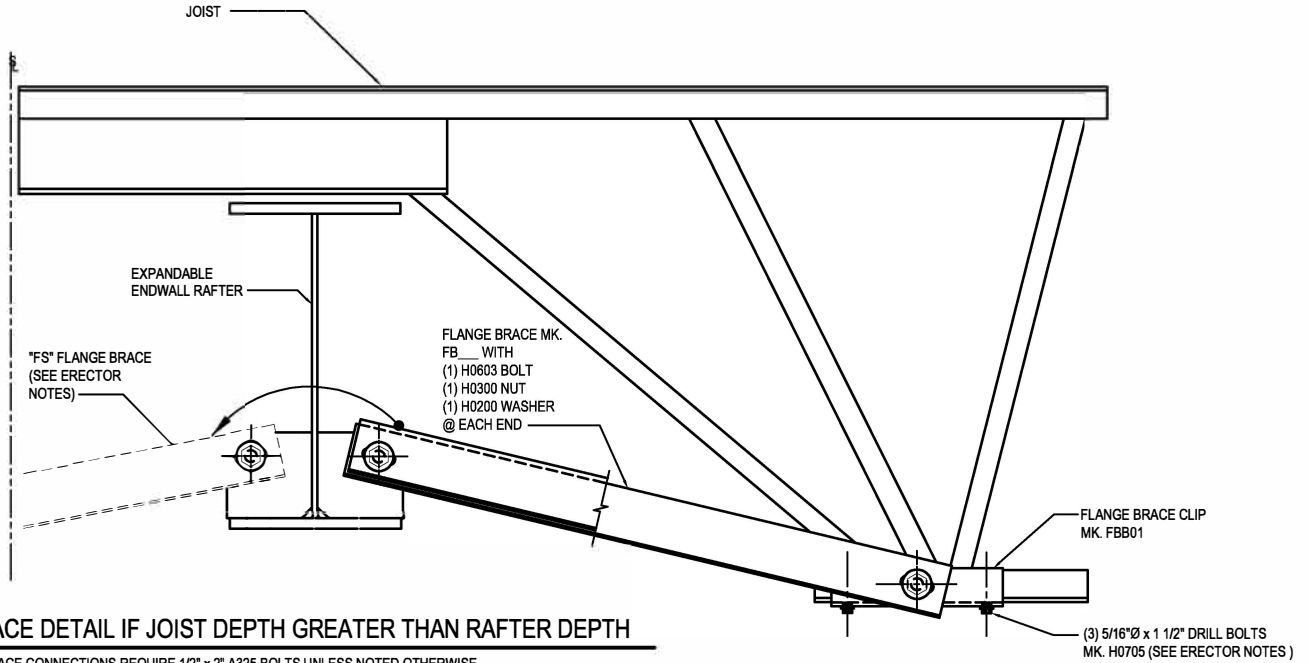
AG0026

Detailer Notes:

- 1) N/A

AG0027 - ALL BOLTED FLANGE BRACE @ EXP EW FOR JOIST & RAFTER CONN

[Download the DWG file by clicking here.](#)



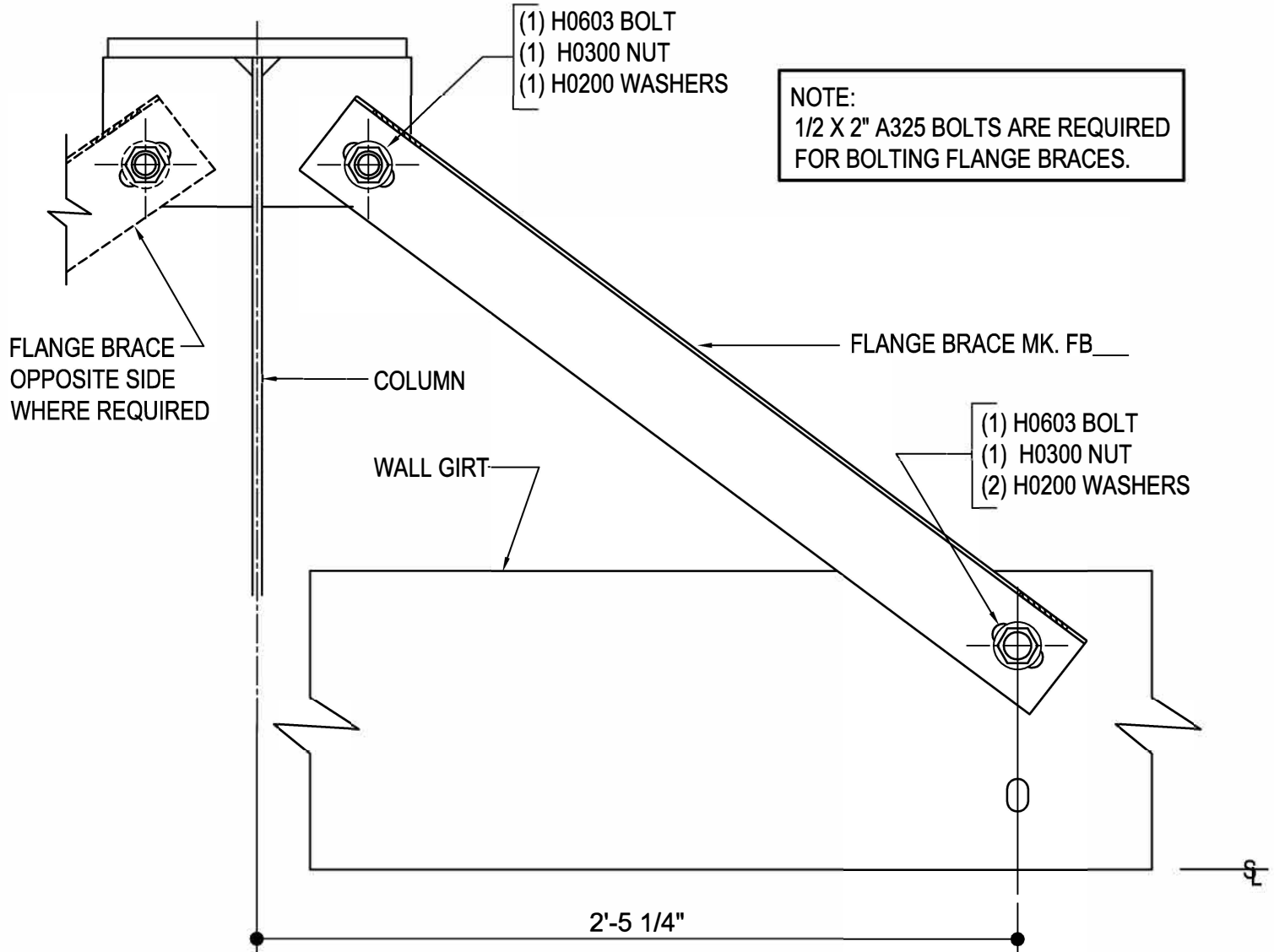
AG0027

Detailer Notes:

- 1) N/A

AG0030 - FLANGE BRACE AT COLUMN & GIRT

[Download the DWG file by clicking here.](#)



FLANGE BRACE AT COLUMN & GIRT

SEE PLANS AND ELEVATIONS FOR FLANGE BRACE LOCATIONS, PART MARKS, & QUANTITIES

AG0030

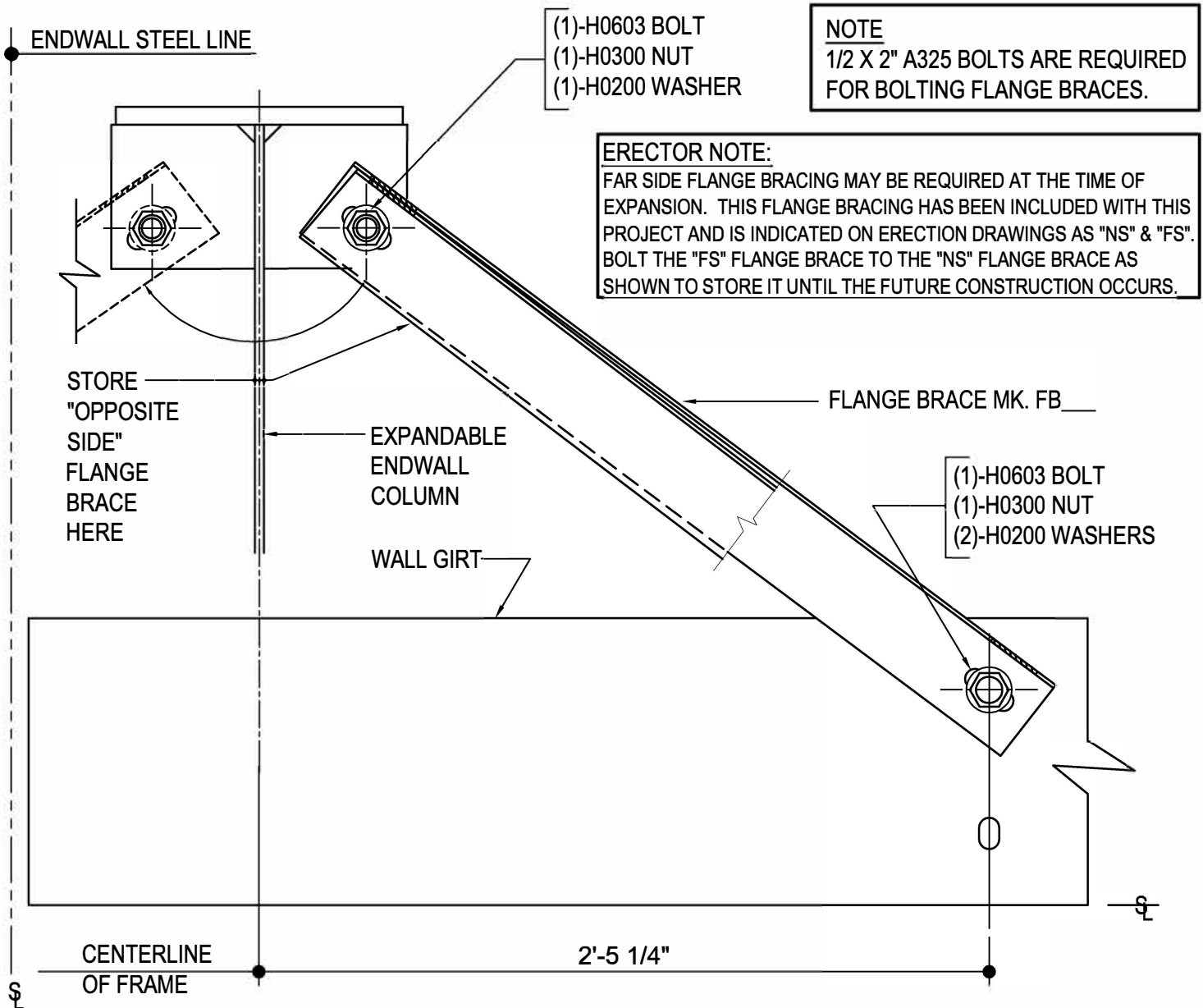
AG0030

Detailer Notes:

- 1) N/A

AG0034 - FLANGE BRACE AT EXP EW COLUMN & GIRT

[Download the DWG file by clicking here.](#)



FLANGE BRACE AT EXPANDABLE ENDWALL COLUMN & GIRT

SEE PLANS AND ELEVATIONS FOR FLANGE BRACE PART MARKS

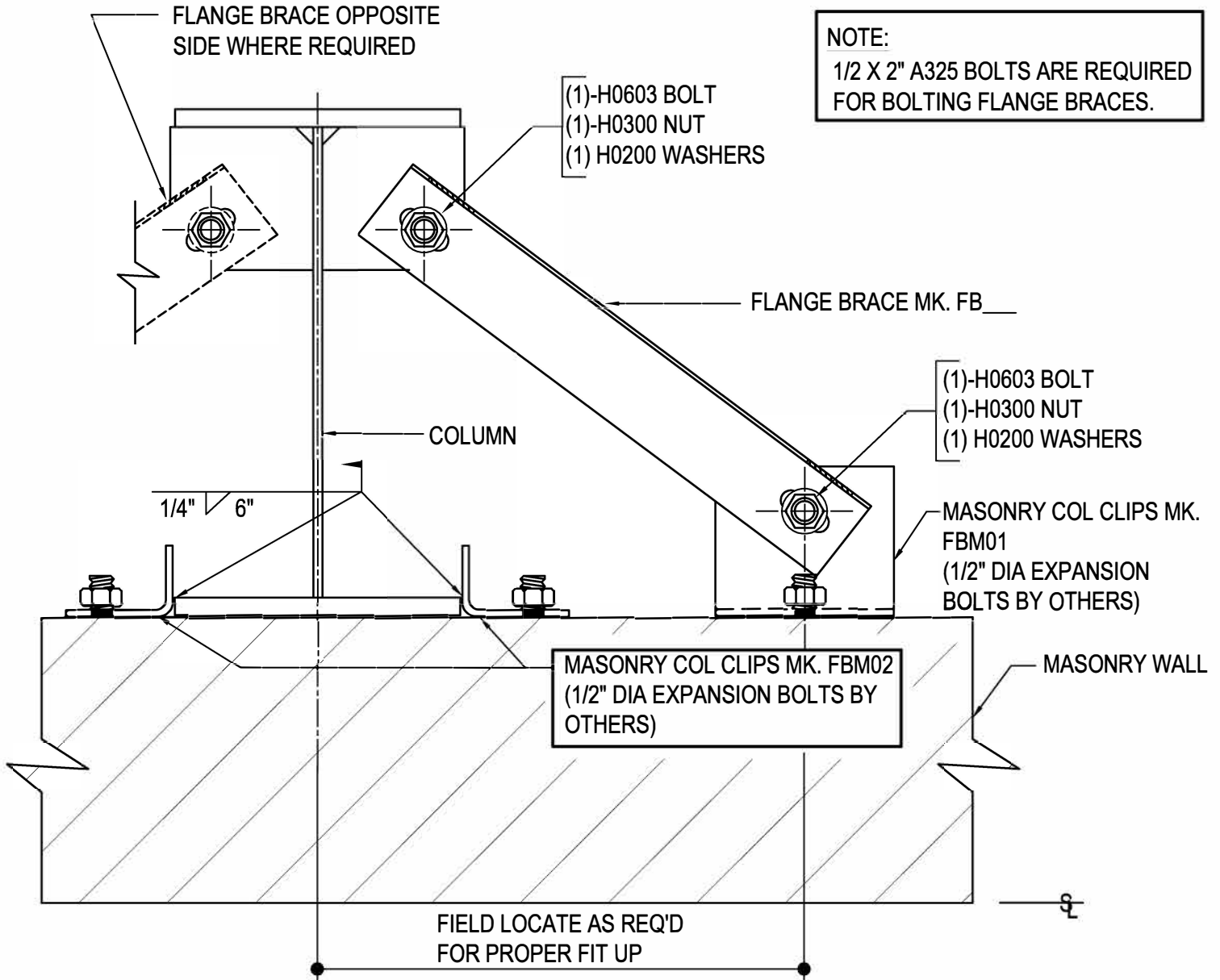
AG0034

Detailer Notes:

- 1) N/A

AG0040 - FLANGE BRACE AT COLUMN & MASONRY WALL

[Download the DWG file by clicking here.](#)



FLANGE BRACE AT COLUMN & MASONRY WALL

SEE PLANS AND ELEVATIONS FOR FLANGE BRACE LOCATIONS, PART MARKS, & QUANTITIES

AG0040

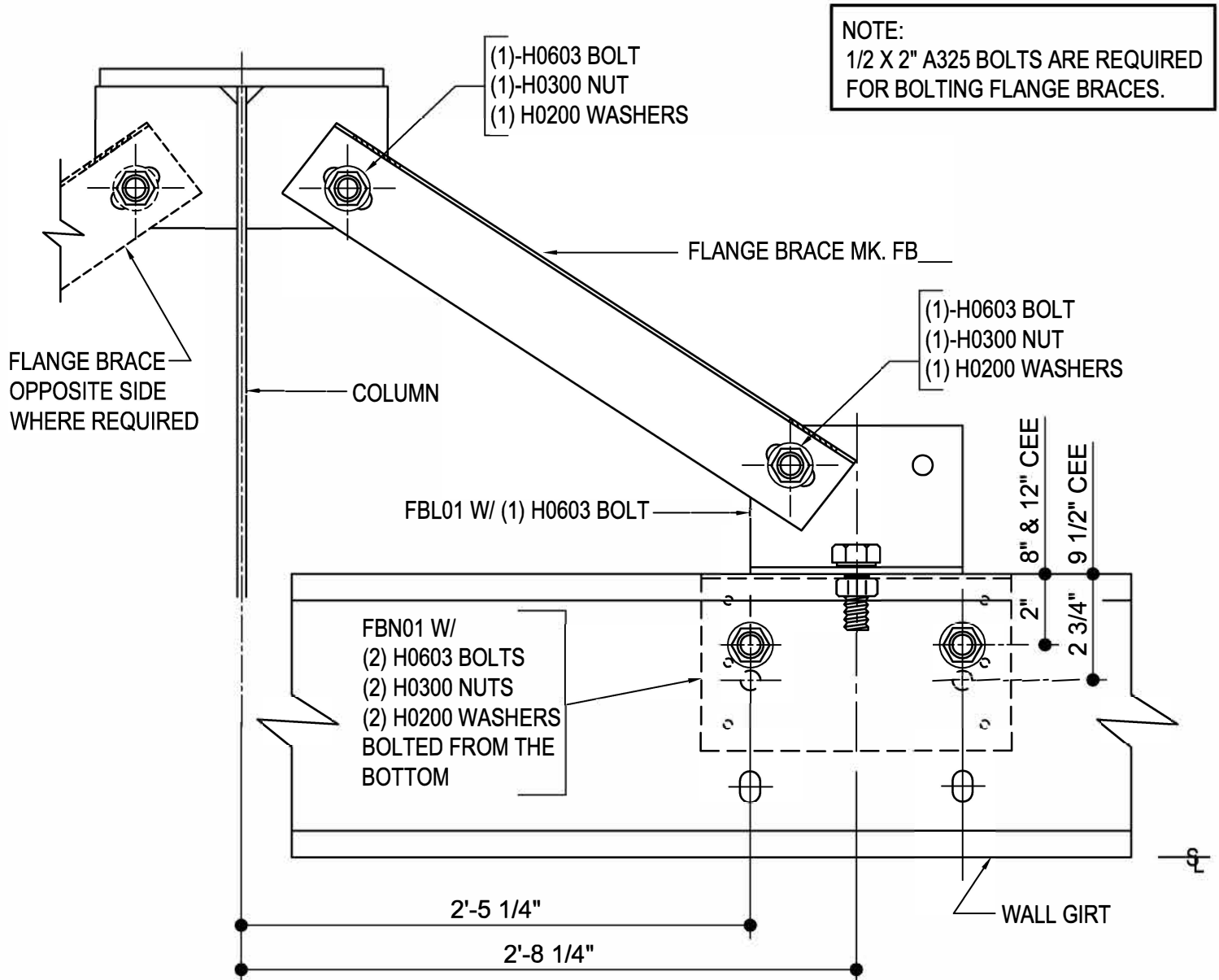
AG0040

Detailer Notes:

1) N/A

AG0050 - FLANGE BRACE AT COLUMN & CEE GIRT

[Download the DWG file by clicking here.](#)



FLANGE BRACE AT COLUMN & CEE GIRT

NOTES: SEE PLANS AND ELEVATIONS FOR FLANGE BRACE LOCATIONS, PART MARKS & QUANTITIES.
INSTALL FLANGE BRACE CLIP FBN01 PRIOR TO ERECTING MASONRY WALL.

AG0050

AG0050

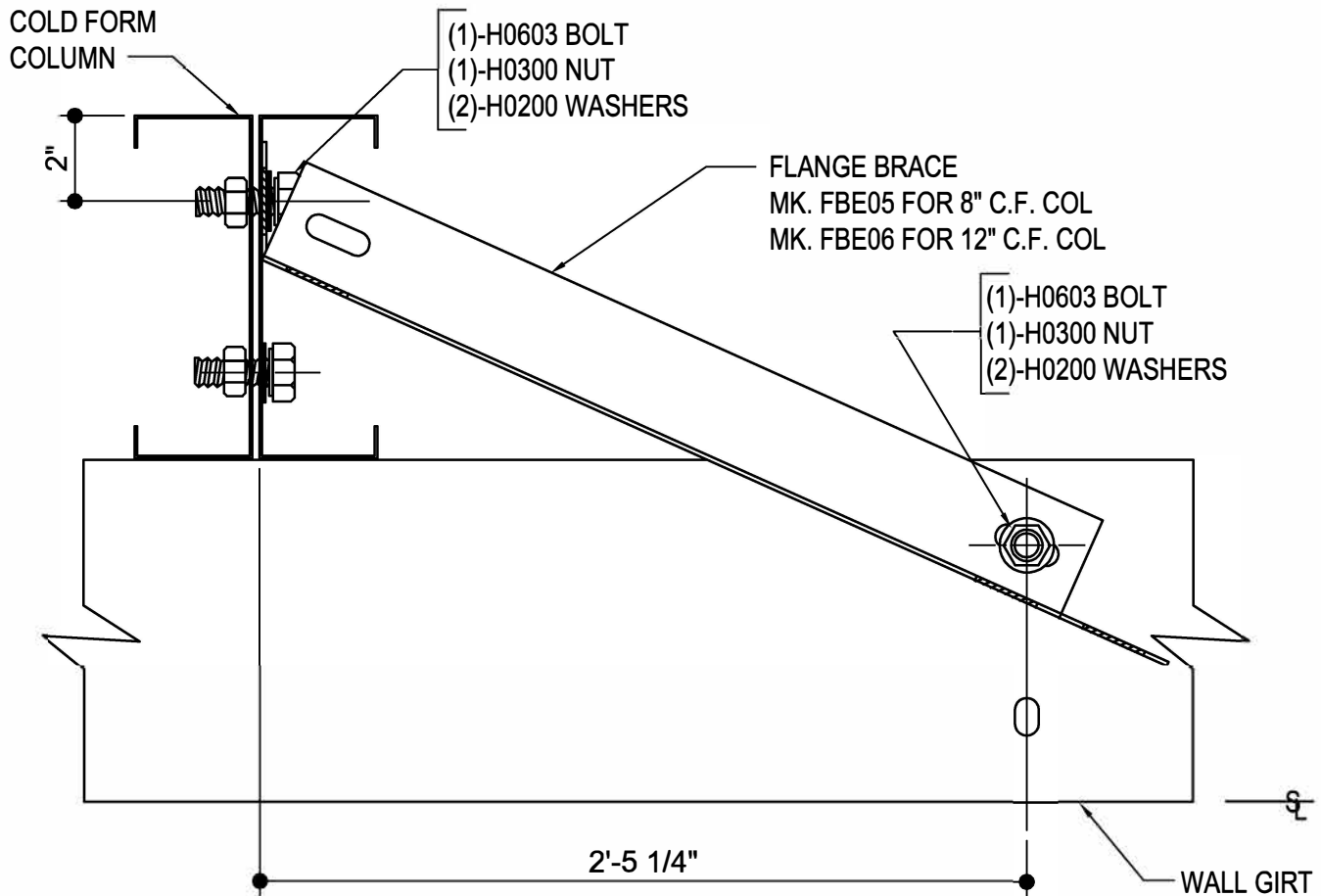
Detailer Notes:

1) N/A

AG0060 - FLANGE BRACE AT C.F. COLUMN & GIRT

[Download the DWG file by clicking here.](#)

NOTE:
1/2 X 2" A325 BOLTS ARE REQUIRED
FOR BOLTING FLANGE BRACES.



FLANGE BRACE AT COLD FORM COLUMN & GIRT

SEE PLANS AND ELEVATIONS FOR FLANGE BRACE PART MARKS,
FIELD BEND FLANGE BRACE FOR PROPER FIT UP

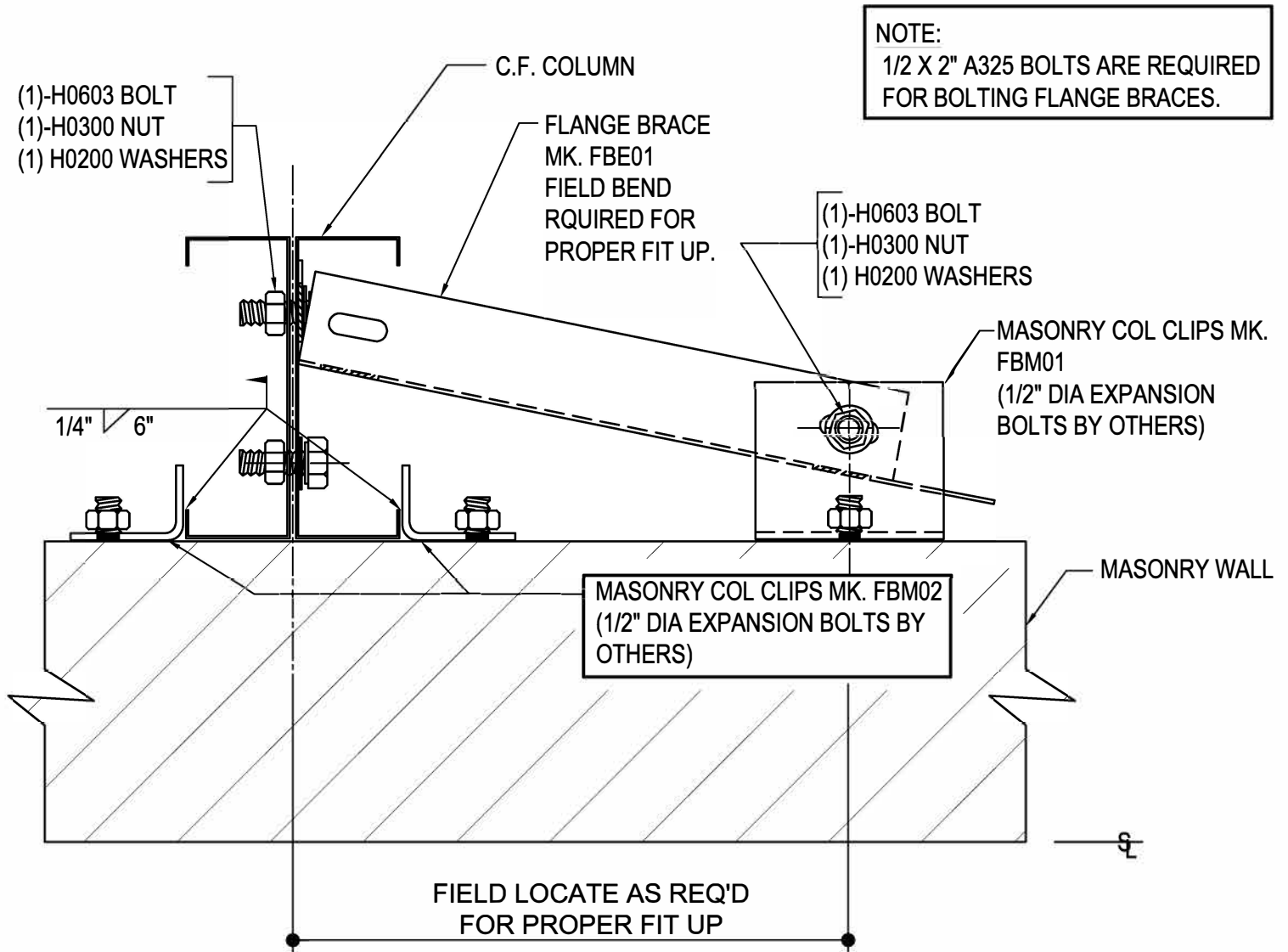
AG0060

Detailer Notes:

- 1) N/A

AG0070 - FLANGE BRACE AT C.F. COL & MAS WALL

[Download the DWG file by clicking here.](#)



FLANGE BRACE AT CF COLUMN & MASONRY WALL

SEE PLANS AND ELEVATIONS FOR FLANGE BRACE PART MARKS

AG0070

Detailer Notes:

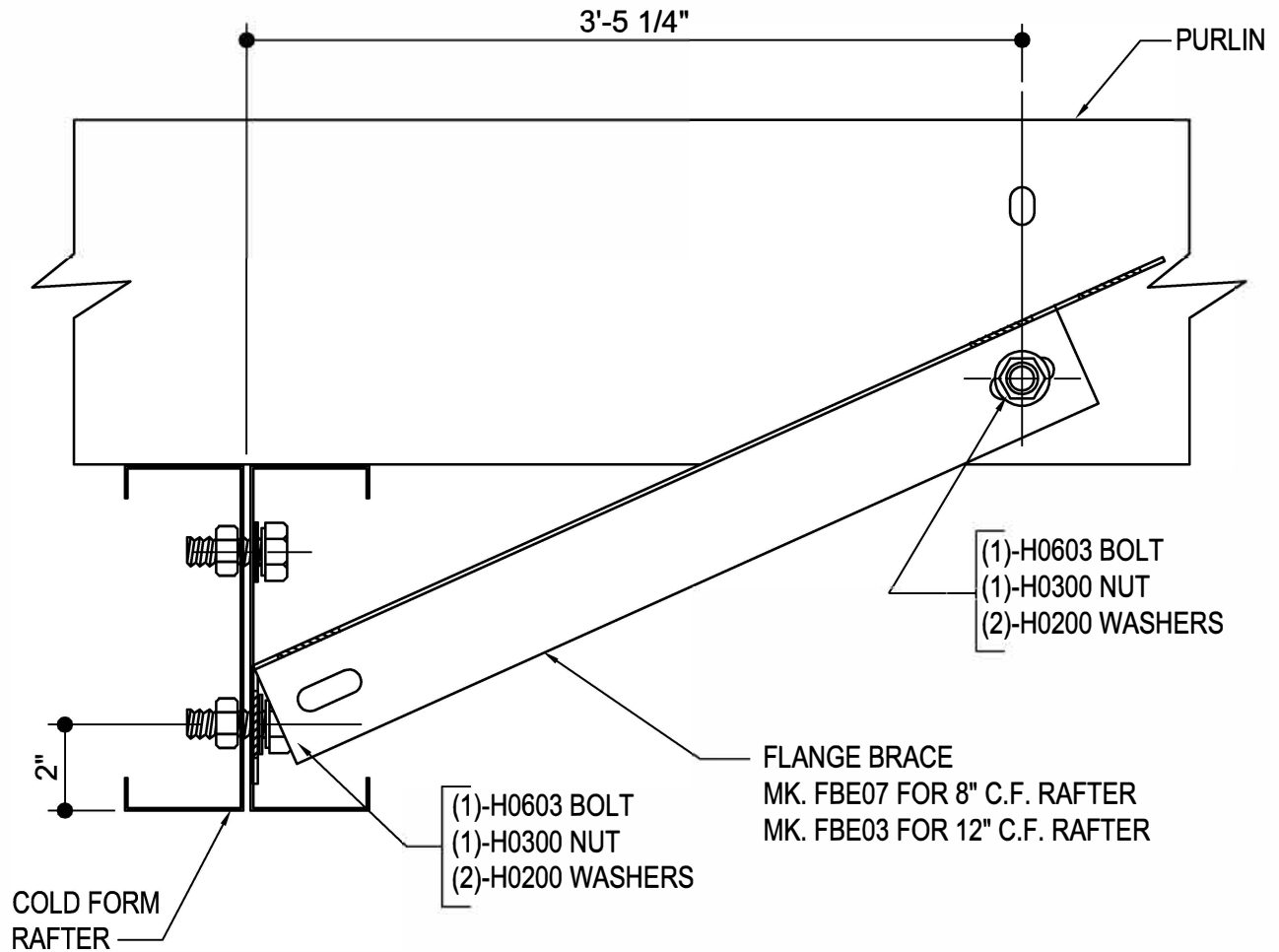
- 1) N/A

AG0080 - FLANGE BRACE AT C.F. RAFTER & PURLIN

[Download the DWG file by clicking here.](#)

NOTE:

1/2 X 2" A325 BOLTS ARE REQUIRED FOR BOLTING FLANGE BRACES.



FLANGE BRACE AT COLD FORM RAFTER & PURLIN

SEE PLANS AND ELEVATIONS FOR FLANGE BRACE PART MARKS, FIELD BEND FLANGE BRACE FOR PROPER FIT UP.

AG0080

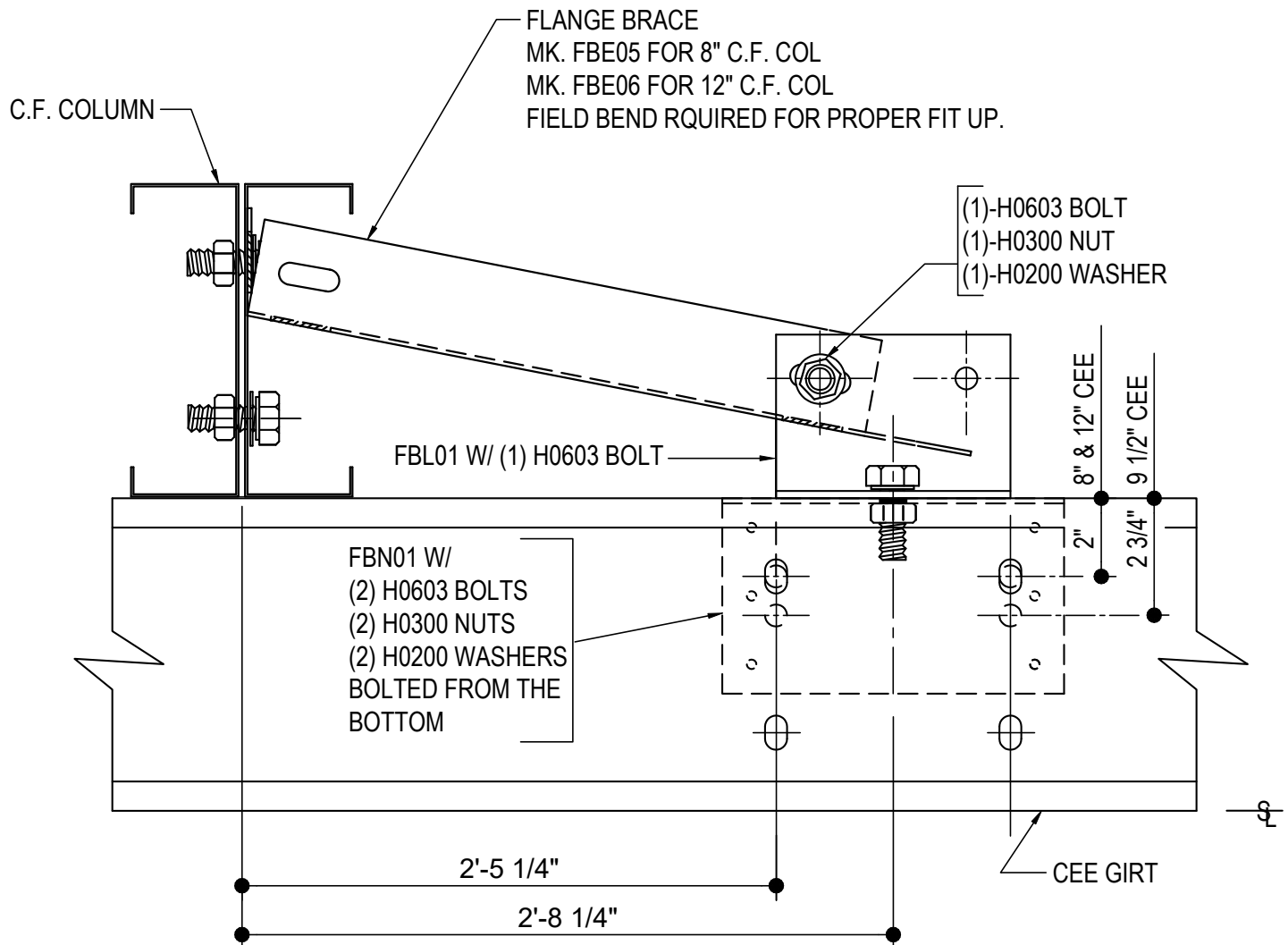
Detailer Notes:

1) N/A

AG0090 - FLANGE BRACE AT CF COL & CEE GIRT

[Download the DWG file by clicking here.](#)

NOTE:
1/2 X 2" A325 BOLTS ARE REQUIRED
FOR BOLTING FLANGE BRACES.



FLANGE BRACE AT CF COLUMN & CEE GIRT

SEE PLANS AND ELEVATIONS FOR FLANGE BRACE PART MARKS,
INSTALL FLANGE BRACE CLIP FBN01 PRIOR TO ERECTING MASONRY WALL.

AG0090

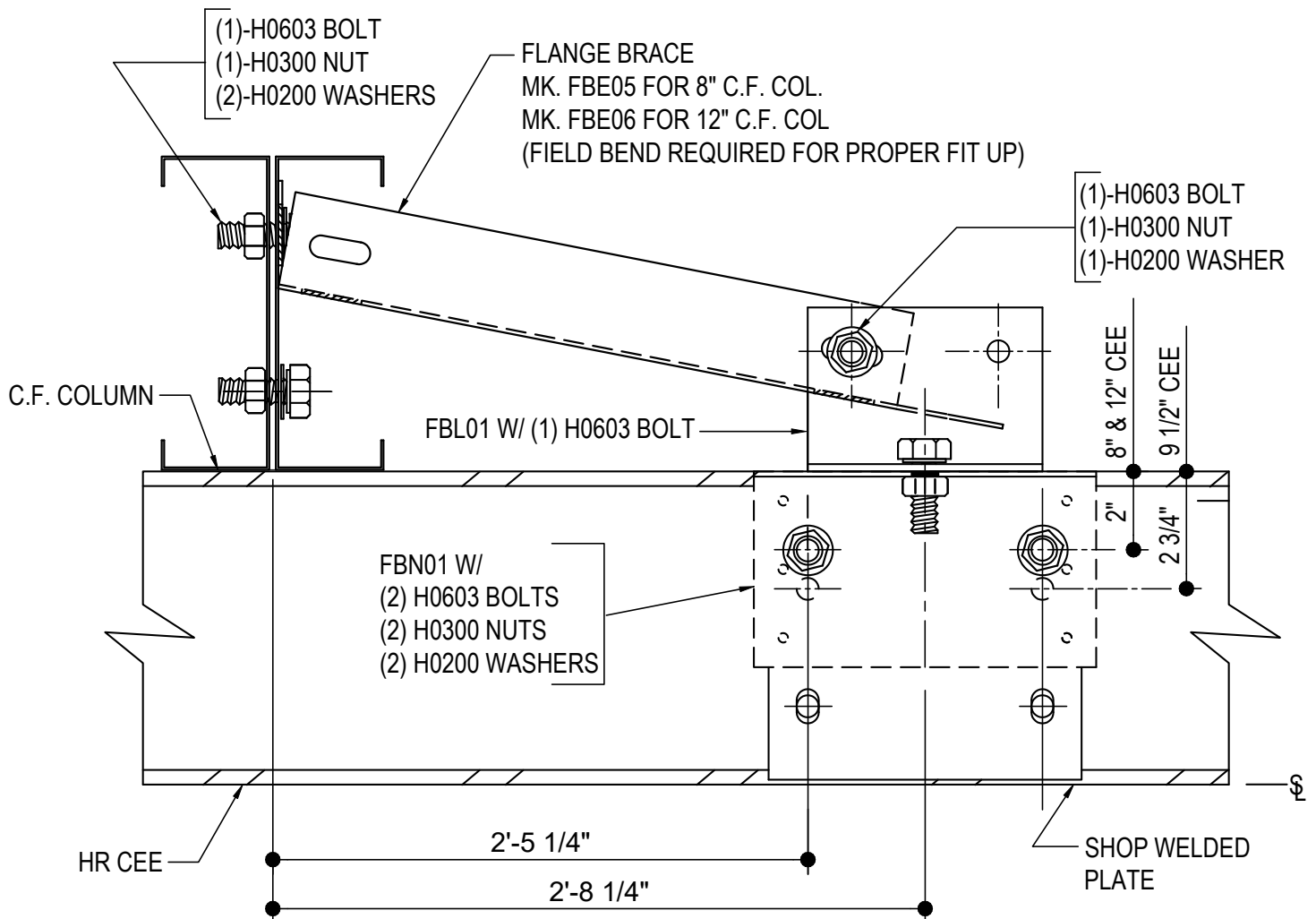
Detailer Notes:

- 1) N/A

AG0100 - FLANGE BRACE AT CF COL & HR CEE

[Download the DWG file by clicking here.](#)

NOTE:
1/2 X 2" A325 BOLTS ARE REQUIRED
FOR BOLTING FLANGE BRACES.



FLANGE BRACE AT CF COLUMN & HR CEE

SEE PLANS AND ELEVATIONS FOR FLANGE BRACE PART MARKS,
INSTALL FLANGE BRACE CLIP FBN01 PRIOR TO ERECTING MASONRY WALL.

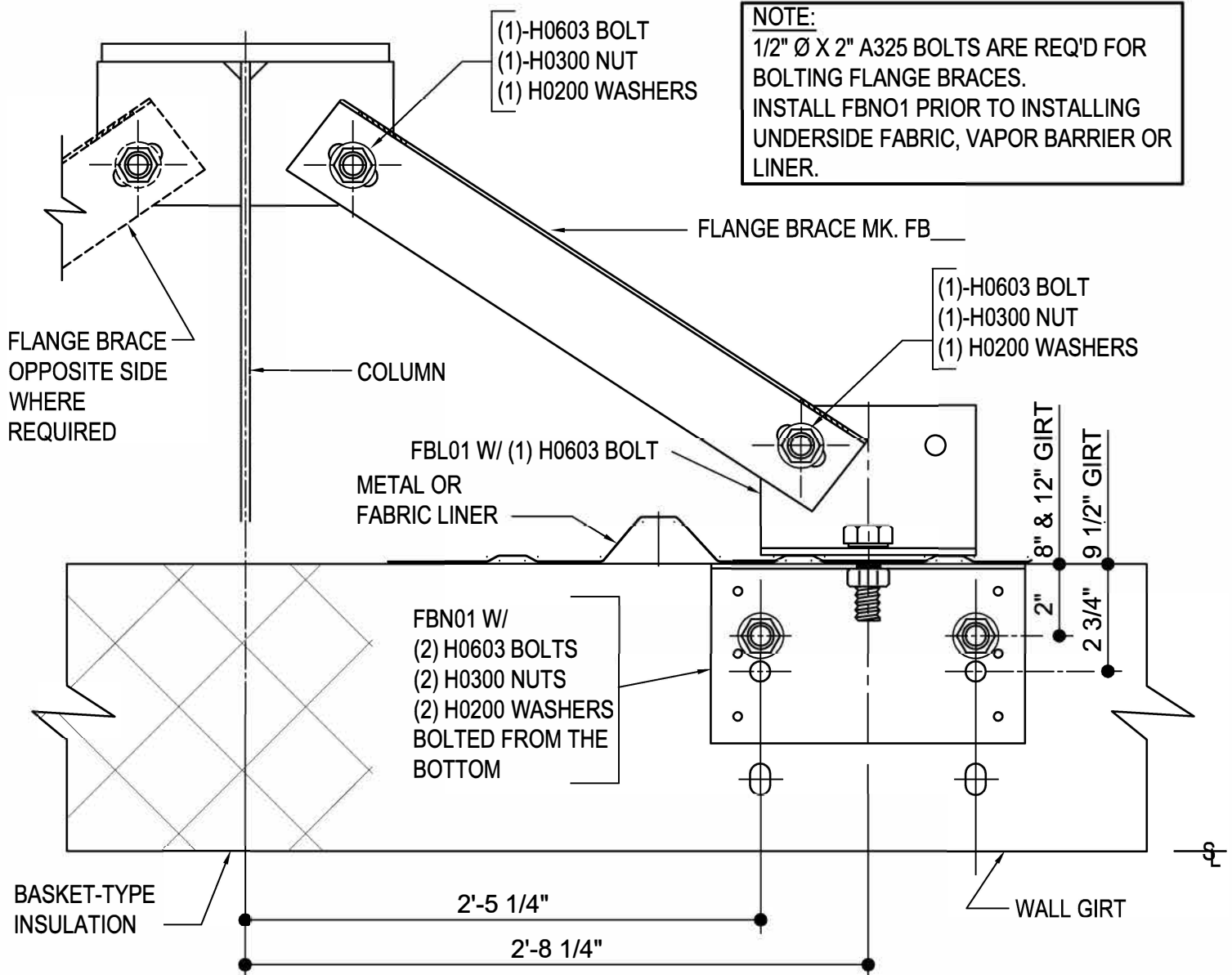
AG0100

Detailer Notes:

- 1) N/A

AG0105 - FLANGE BRACE WITH BASKET INSULATION OR LINER AT COLUMN

[Download the DWG file by clicking here.](#)



FLANGE BRACE WITH BASKET INSUL OR LINER AT COLUMN

SEE PLANS AND ELEVATIONS FOR FLANGE BRACE LOCATIONS, PART MARKS, & QUANTITIES

AG0105

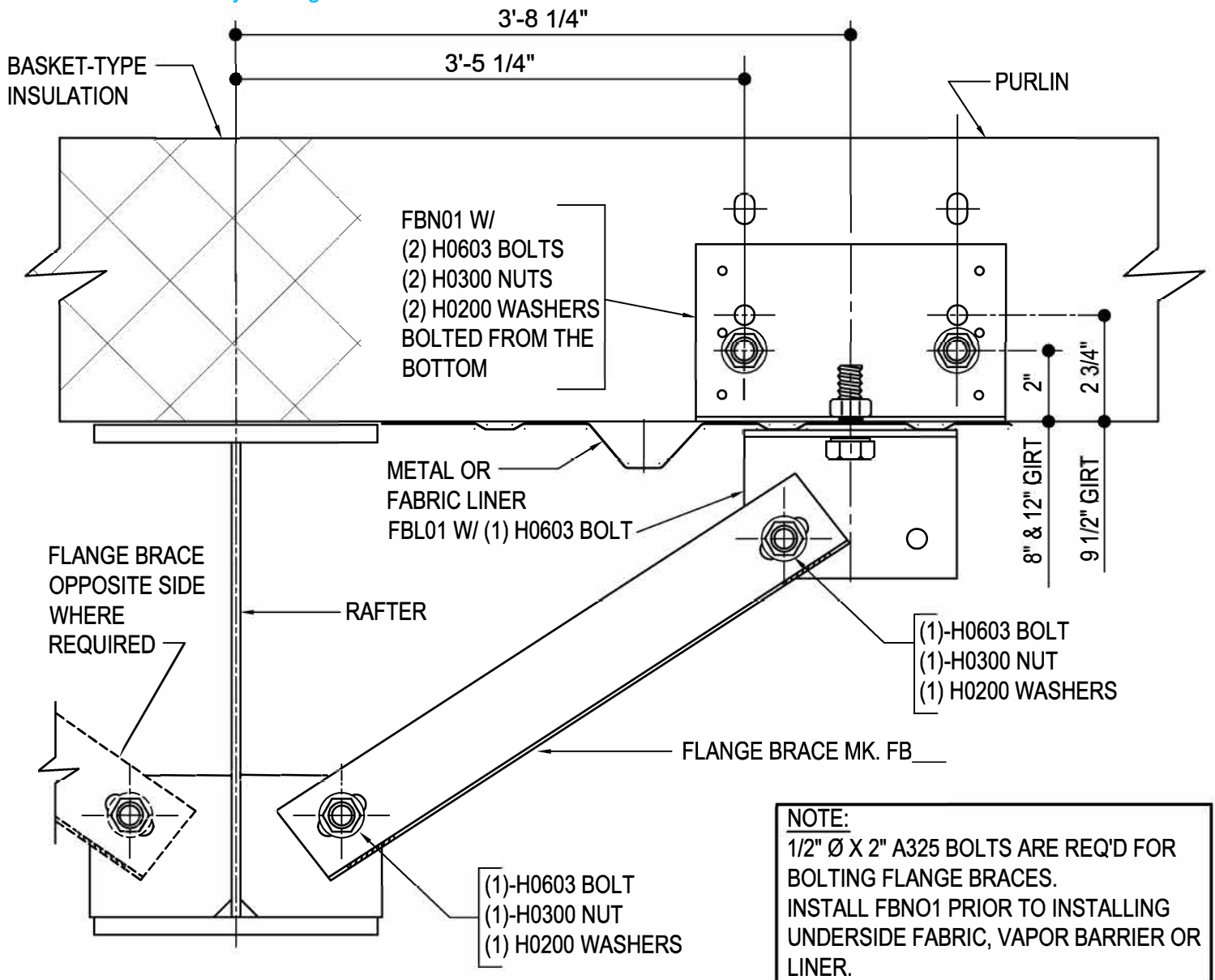
AG0105

Detailer Notes:

- 1) USE DETAIL ON ALL BASKET TYPE INSULATION SYSTEMS, FABRIC LINER OR METAL LINER JOBS.

AG0110 - FLANGE BRACE WITH BASKET INSUL OR LINER AT RAFTER

[Download the DWG file by clicking here.](#)



FLANGE BRACE WITH BASKET INSUL OR LINER AT RAFTER

AG0110

SEE PLANS AND ELEVATIONS FOR FLANGE BRACE LOCATIONS, PART MARKS,
& QUANTITIES

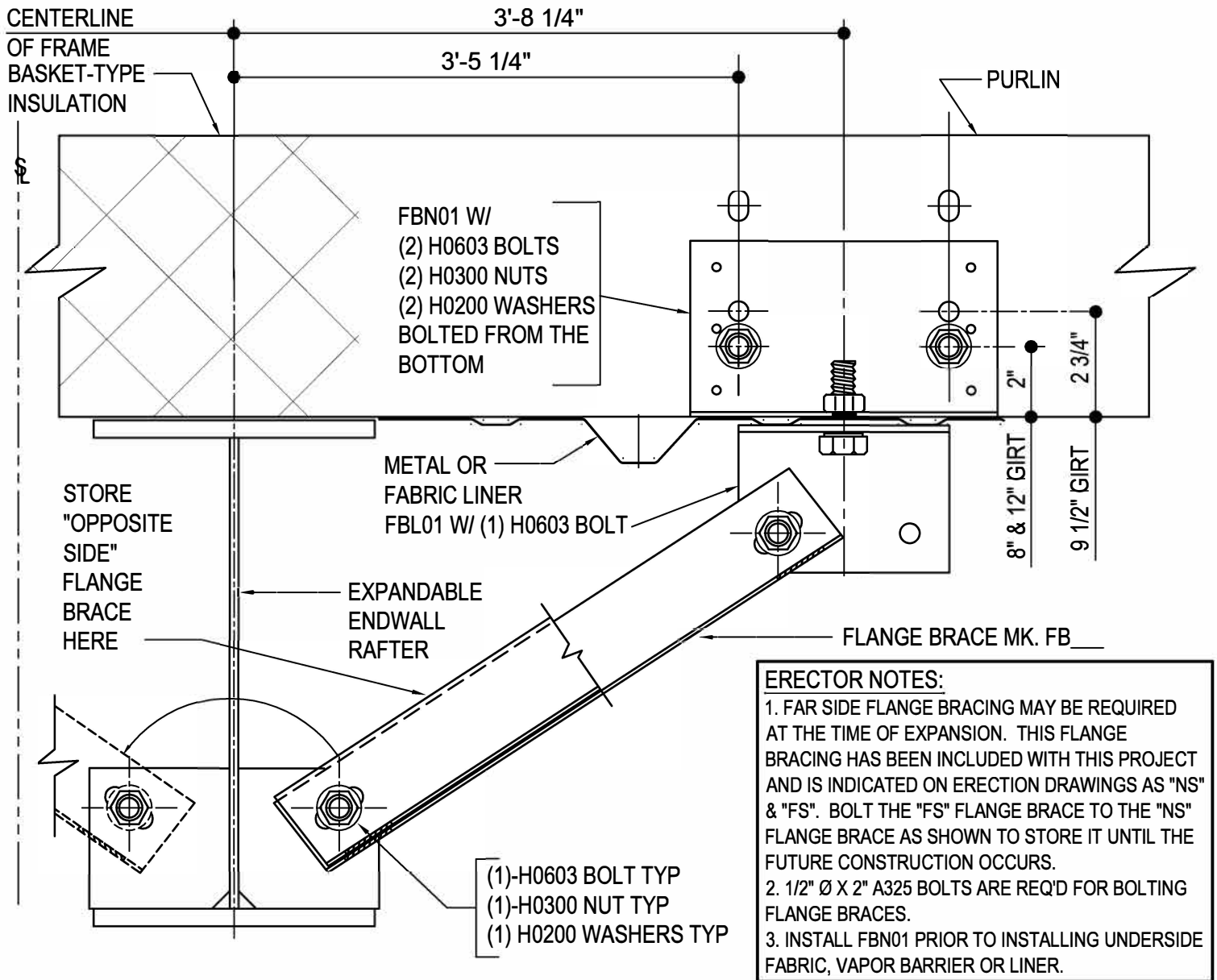
AG0110

Detailer Notes:

- 1) USE DETAIL ON ALL BASKET TYPE INSULATION SYSTEMS, FABRIC LINER OR METAL LINER JOBS.

AG0140 - FLANGE BRACE WITH BASKET INSUL OR LINER @ EW RAFTER

[Download the DWG file by clicking here.](#)



FLANGE BRACE WITH BASKET INSUL OR LINER @ EW RAFTER

SEE PLANS AND ELEVATIONS FOR FLANGE BRACE PART MARKS

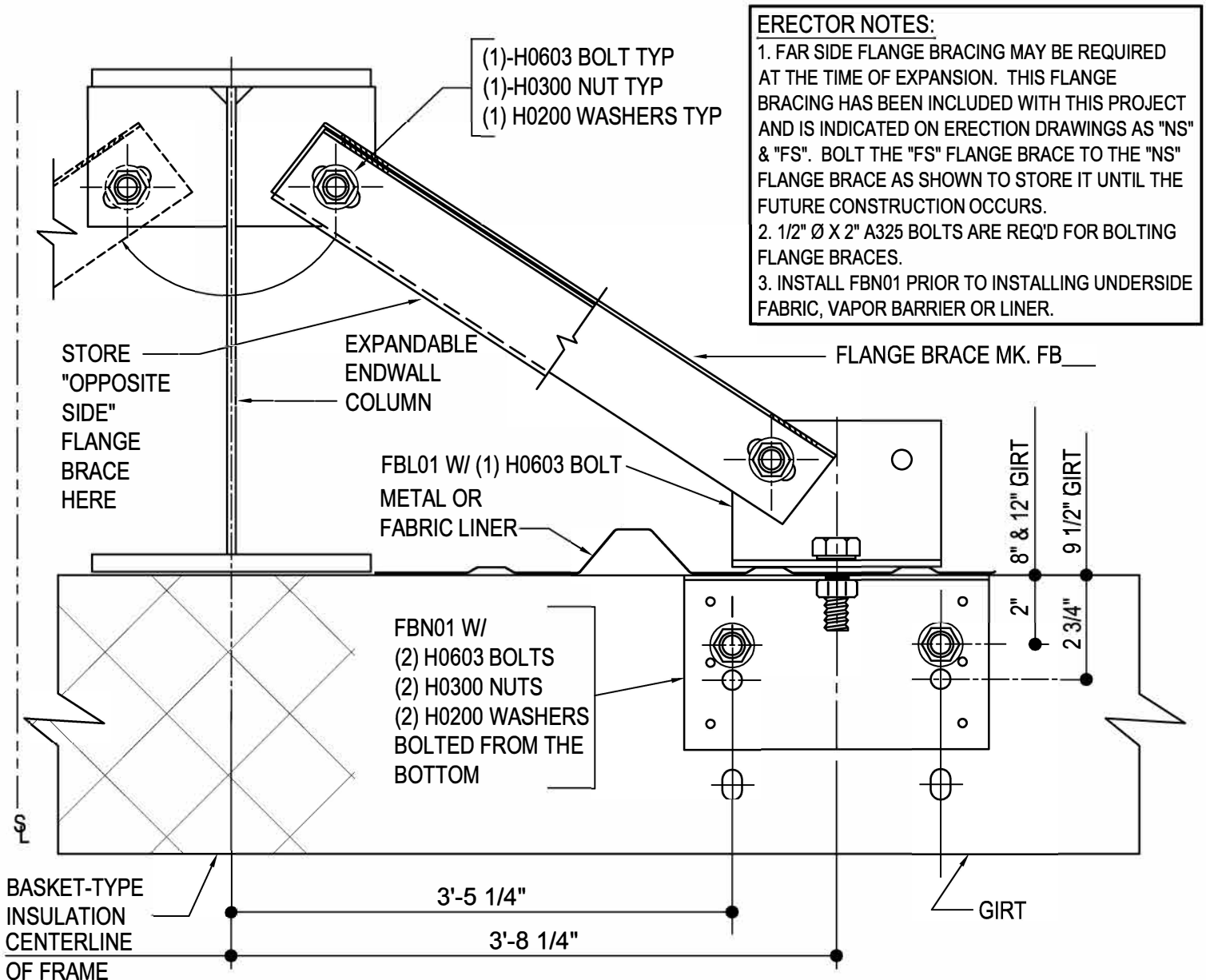
AG0140

Detailer Notes:

- 1) USE DETAIL ON ALL BASKET TYPE INSULATION SYSTEMS, FABRIC LINER OR METAL LINER JOBS.

AG0160 - FLANGE BRACE WITH BASKET INSUL OR LINER @ EXP EW COL

[Download the DWG file by clicking here.](#)



ERECTOR NOTES:

1. FAR SIDE FLANGE BRACING MAY BE REQUIRED AT THE TIME OF EXPANSION. THIS FLANGE BRACING HAS BEEN INCLUDED WITH THIS PROJECT AND IS INDICATED ON ERECTION DRAWINGS AS "NS" & "FS". BOLT THE "FS" FLANGE BRACE TO THE "NS" FLANGE BRACE AS SHOWN TO STORE IT UNTIL THE FUTURE CONSTRUCTION OCCURS.
2. 1/2" Ø X 2" A325 BOLTS ARE REQ'D FOR BOLTING FLANGE BRACES.
3. INSTALL FBN01 PRIOR TO INSTALLING UNDERSIDE FABRIC, VAPOR BARRIER OR LINER.

FLANGE BRACE WITH BASKET INSUL OR LINER @ EW COLUMN

SEE PLANS AND ELEVATIONS FOR FLANGE BRACE PART MARKS

AG0160

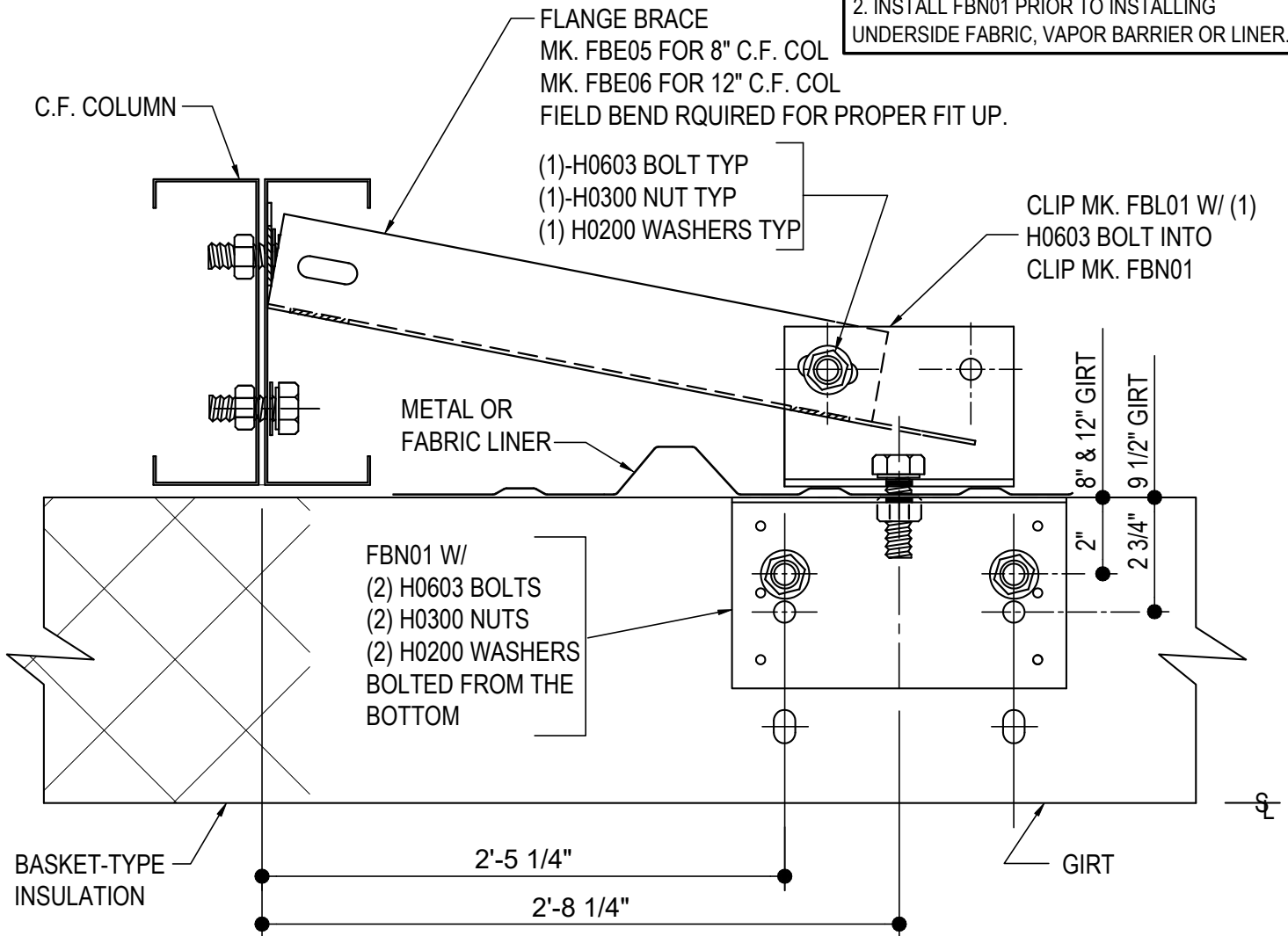
Detailer Notes:

- 1) USE DETAIL ON ALL BASKET TYPE INSULATION SYSTEMS, FABRIC LINER OR METAL LINER JOBS.

AG0170 - FLANGE BRACE AT CF COLUMN & GIRT W/ LINER

[Download the DWG file by clicking here.](#)

ERECTOR NOTES:
 1. 1/2" Ø X 2" A325 BOLTS ARE REQ'D FOR BOLTING FLANGE BRACES.
 2. INSTALL FBN01 PRIOR TO INSTALLING UNDERSIDE FABRIC, VAPOR BARRIER OR LINER.



FLANGE BRACE AT COLD FORM COLUMN & GIRT

SEE PLANS AND ELEVATIONS FOR FLANGE BRACE PART MARKS

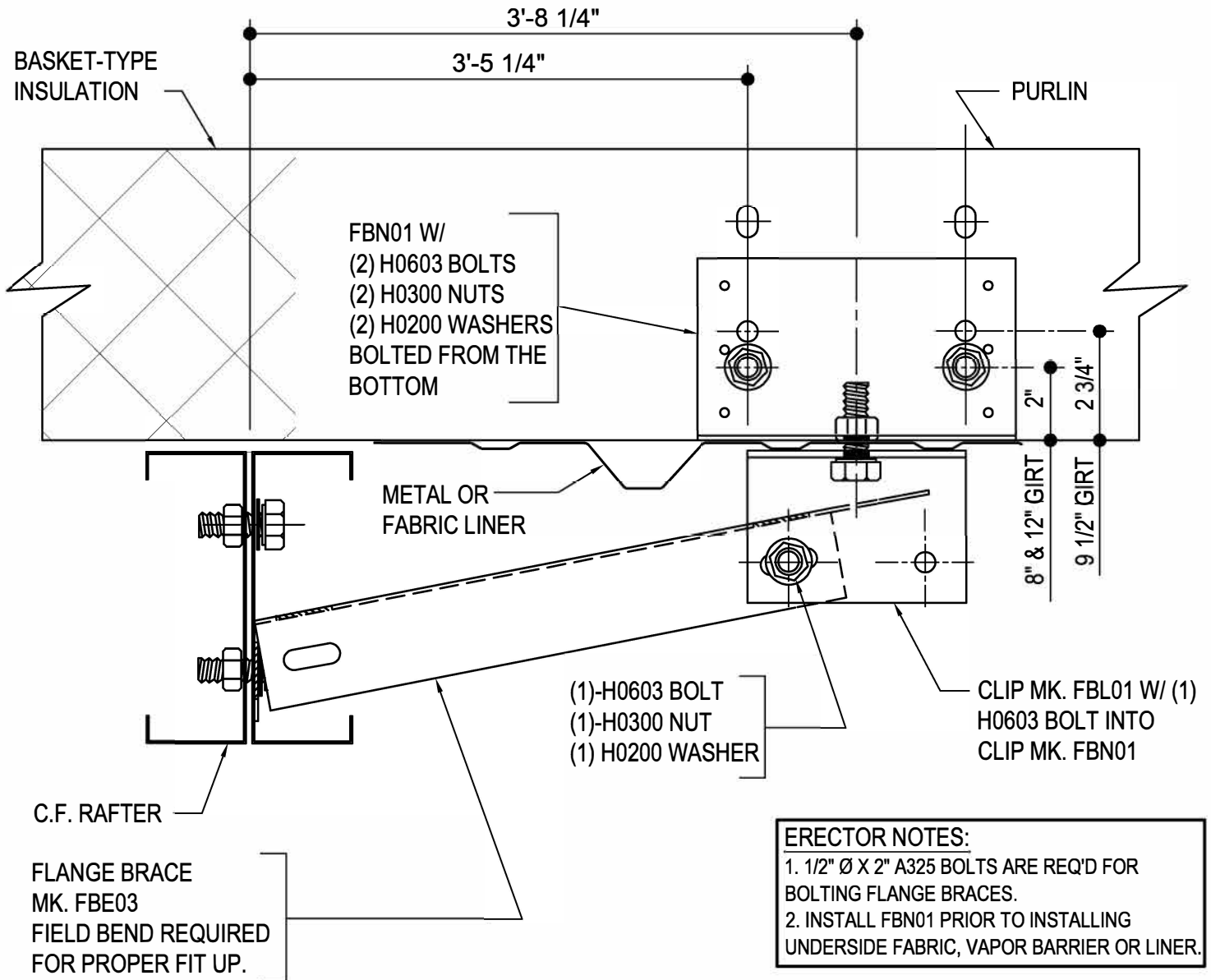
AG0170

Detailer Notes:

- 1) USE DETAIL ON ALL BASKET TYPE INSULATION SYSTEMS, FABRIC OR METAL LINER JOBS.

AG0180 - FLANGE BRACE AT CF RAFTER & PURLIN W/ LINER

[Download the DWG file by clicking here.](#)



FLANGE BRACE AT COLD FORM RAFTER & PURLIN

SEE PLANS AND ELEVATIONS FOR FLANGE BRACE PART MARKS

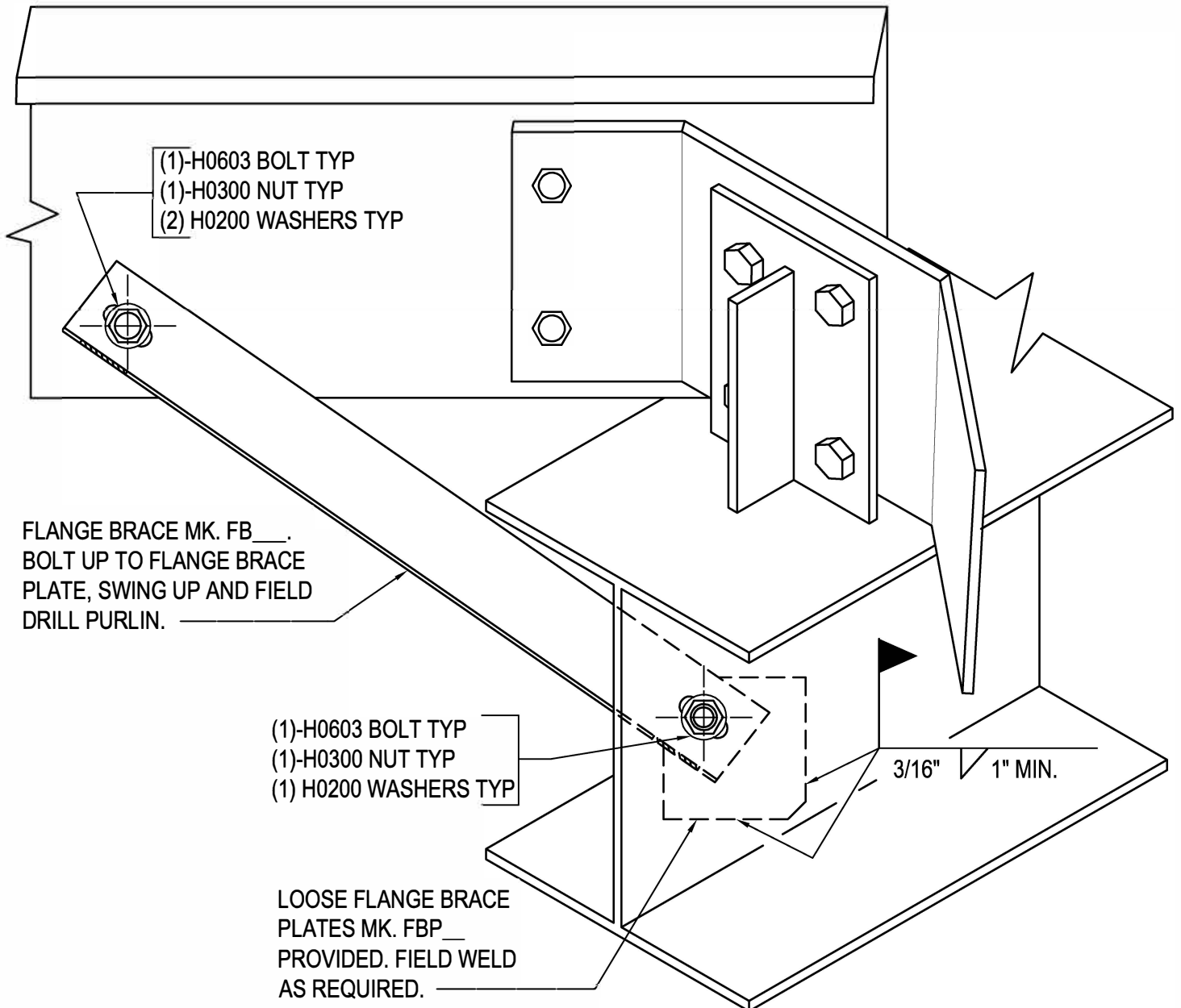
AG0180

Detailer Notes:

- 1) USE DETAIL ON ALL BASKET TYPE INSULATION SYSTEMS, FABRIC OR METAL LINER JOBS.

AG0210 - FLANGE BRACE PURLIN & HIP/VALLEY RAFTER

[Download the DWG file by clicking here.](#)



FLANGE BRACE AT PURLIN & HIP/VALLEY RAFTER

SEE PLANS AND ELEVATIONS FOR FLANGE BRACE LOCATIONS, PART MARKS,
& QUANTITIES.

1/2"Ø X 2" A325 BOLTS ARE REQ'D FOR BOLTING FLANGE BRACES.

AG0210

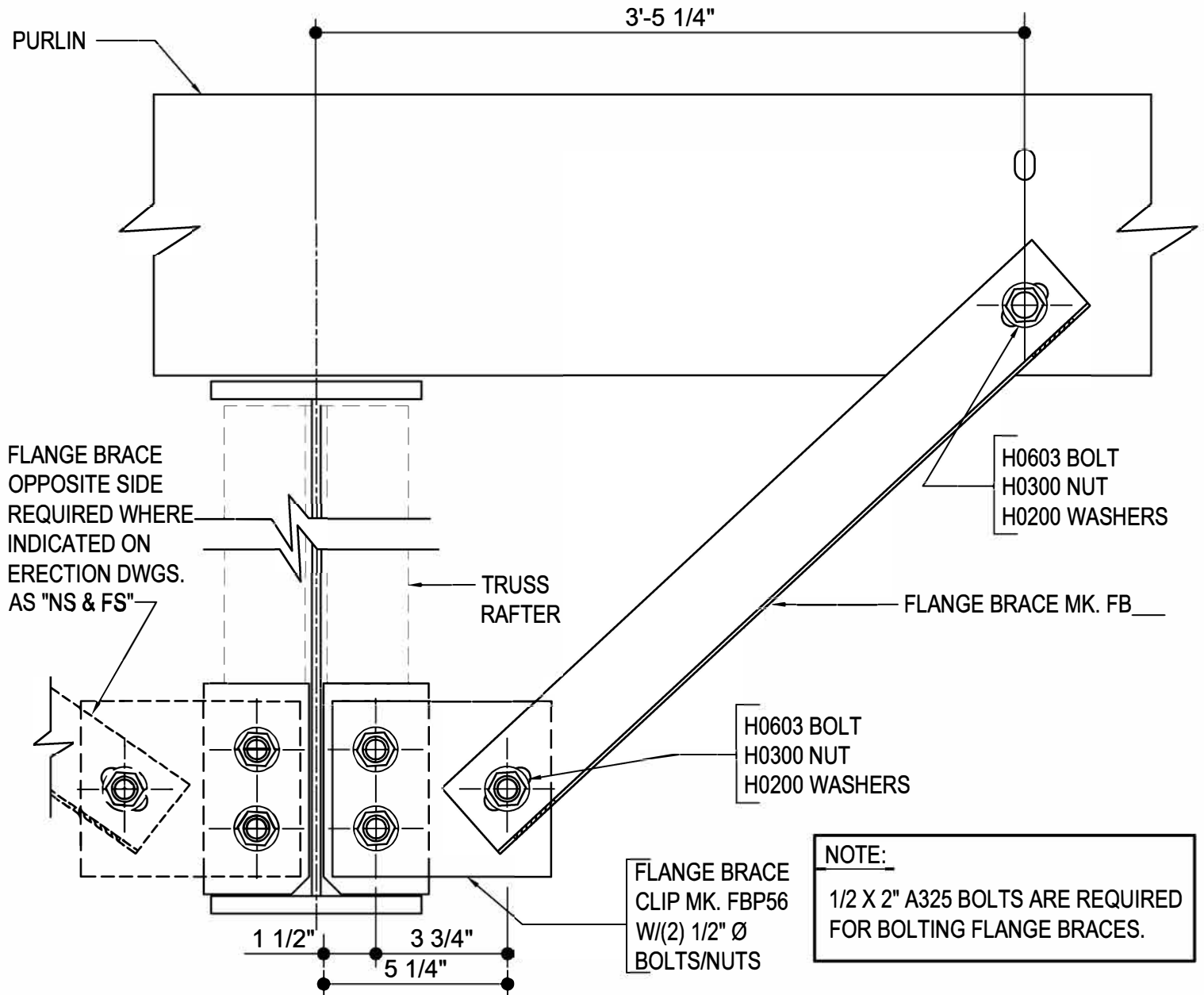
AG0210

Detailer Notes:

1) N/A

AG0500 - FLANGE BRACE @ TRUSS FRAME (6" RAFTER FLANGES)

[Download the DWG file by clicking here.](#)



FLANGE BRACE AT TRUSS FRAME

BOLTED FLANGE BRACING AT 6" FLANGES
SEE PLANS AND ELEVATIONS FOR FLANGE BRACE PART MARKS

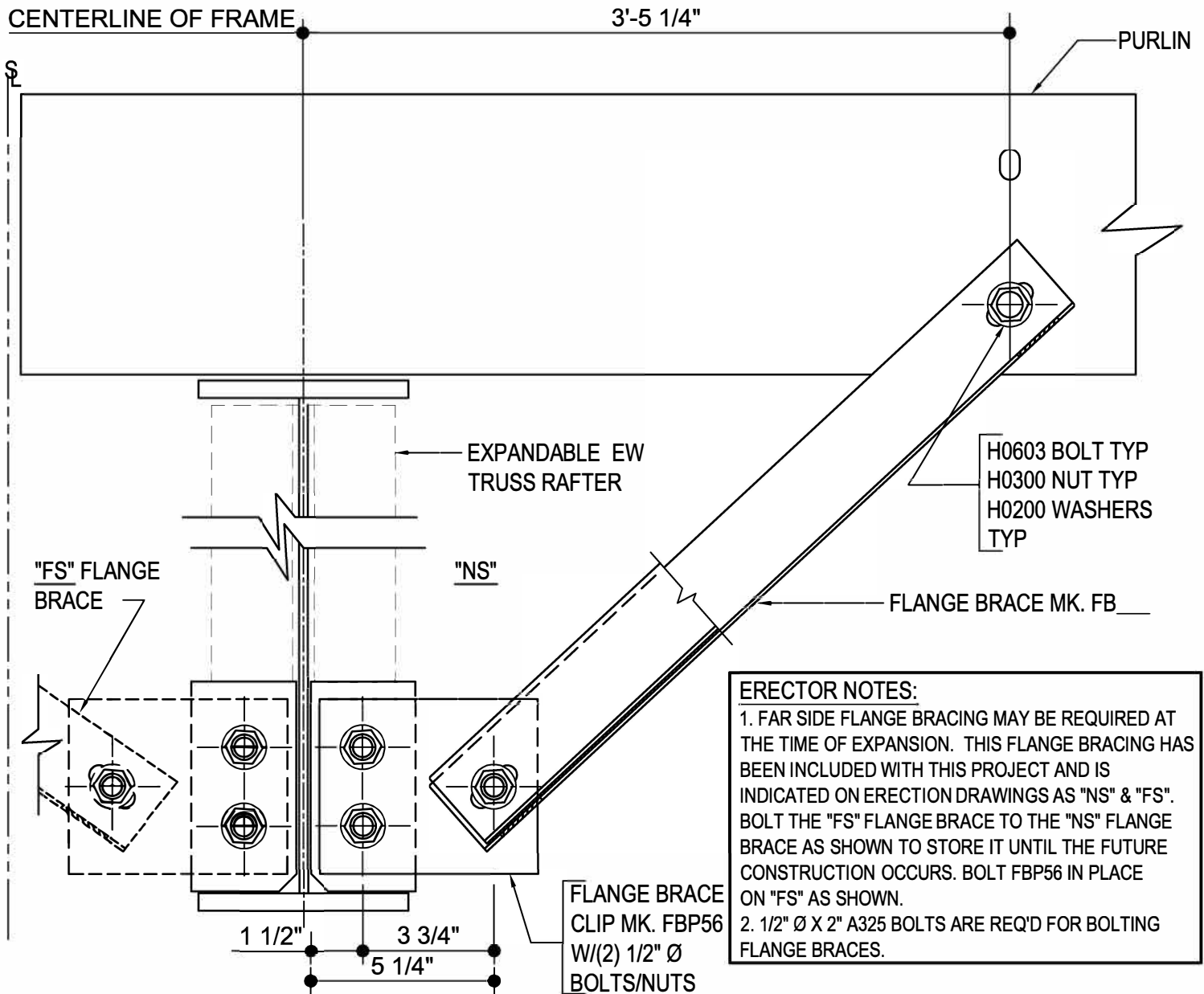
AG0500

Detailer Notes:

- 1) A STANDARD FLANGE BRACE IS ONLY ALLOWED ON RAFTERS 60" OR LESS WITH PURLINS. VERIFY WITH ENGINEER IF THE STANDARD FLANGE BRACING IS SPECIFIED OVER 60".

AG0510 - FLANGE BRACE @ EXP EW TRUSS FRAME (6" RAFTER FLANGES)

[Download the DWG file by clicking here.](#)



FLANGE BRACE AT EXPANDABLE EW TRUSS FRAME

BOLTED FLANGE BRACING AT 6" FLANGES
SEE PLANS AND ELEVATIONS FOR FLANGE BRACE PART MARKS

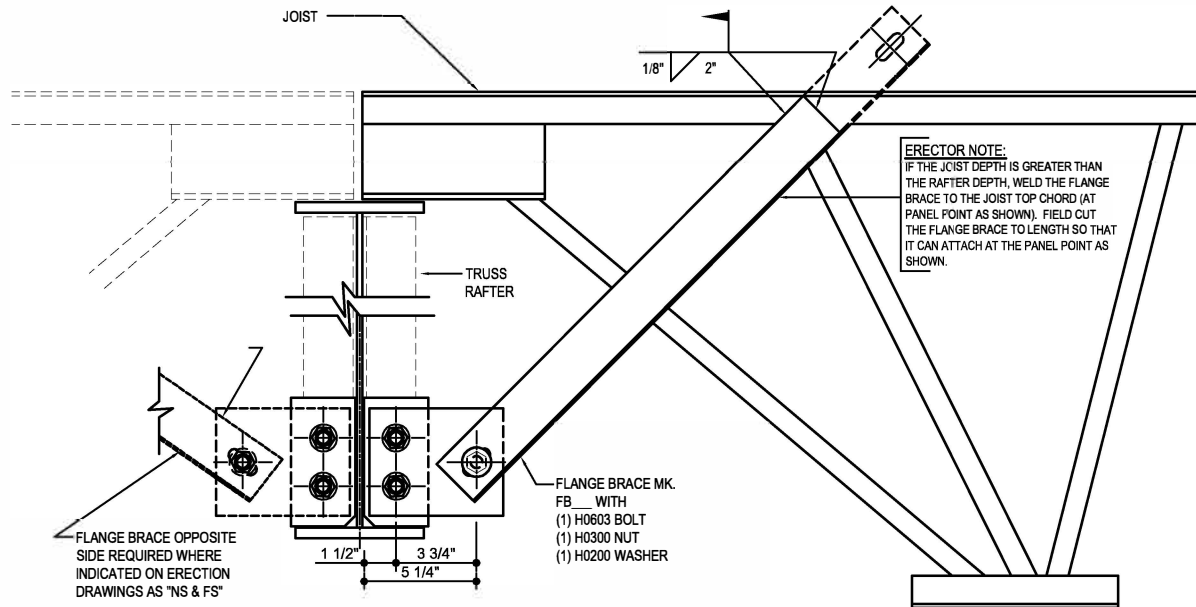
AG0510

Detailer Notes:

1) A STANDARD FLANGE BRACE IS ONLY ALLOWED ON RAFTERS 60" OR LESS WITH PURLINS. VERIFY WITH ENGINEER IF THE STANDARD FLANGE BRACING IS SPECIFIED OVER 60".

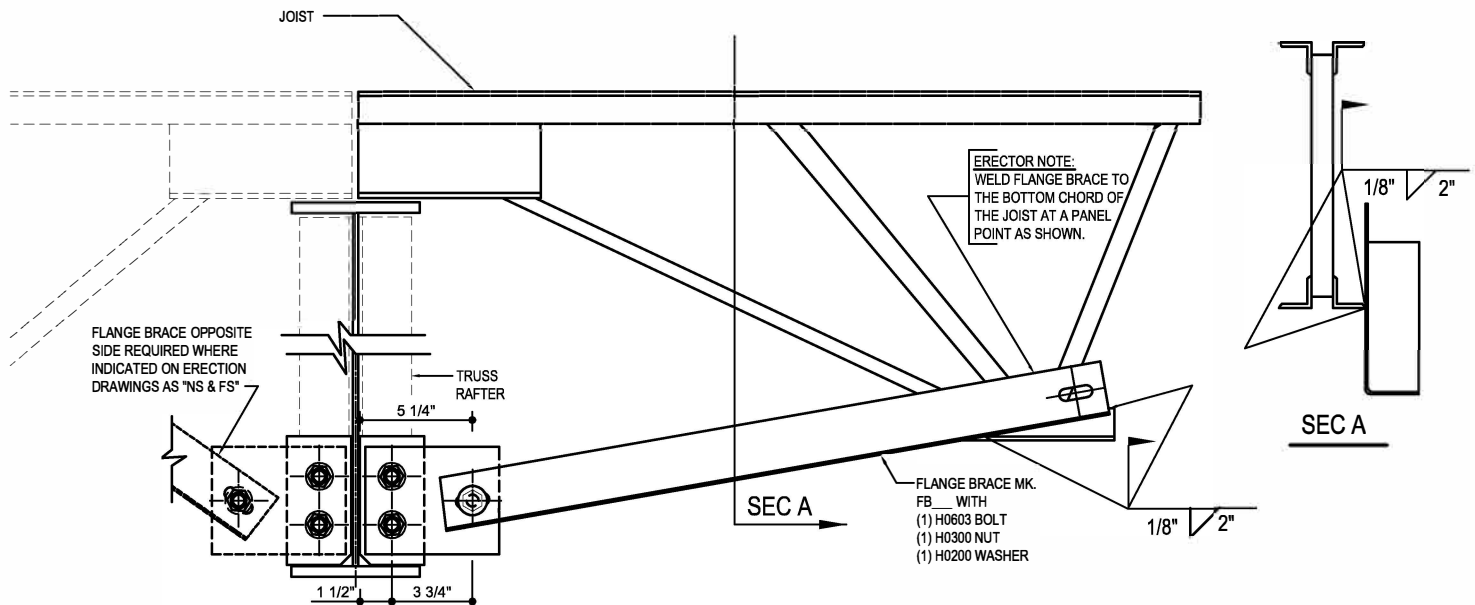
AG0520 - FLANGE BRACE DETAILS FOR JOIST TO TRUSS RAFTER CONNECTION (6" RAFTER FLANGES)

[Download the DWG file by clicking here.](#)



FLANGE BRACE DETAILS IF JOIST DEPTH GREATER THAN TRUSS RAFTER DEPTH

ALL FLANGE BRACE CONNECTIONS REQUIRE 1/2" x 2" A325 BOLTS UNLESS NOTED OTHERWISE
SEE PLANS AND ELEVATIONS FOR FLANGE BRACE PART MARKS



FLANGE BRACE DETAILS IF TRUSS RAFTER DEPTH GREATER THAN JOIST DEPTH

ALL FLANGE BRACE CONNECTIONS REQUIRE 1/2" x 2" A325 BOLTS UNLESS NOTED OTHERWISE
SEE PLANS AND ELEVATIONS FOR FLANGE BRACE PART MARKS

AG0520

Detailer Notes:

- 1) N/A